

TECHNICAL MANUAL

**ORGANIZATIONAL, DIRECT AND
GENERAL SUPPORT REPAIR PARTS AND
SPECIAL TOOLS LIST
FOR
AIR CONDITIONER, VERTICAL COMPACT,
9,000 BTU/HR, 208 VOLTS, 3-PHASE, 50/60 HZ
(TIERNAY MODEL TM-9KV-208-3-60)
NSN 4120-01-091-9672**

**HEADQUARTERS, DEPARTMENT OF THE ARMY
18 DECEMBER 1981**

CHANGE

NO. 2

HEADQUARTERS
DEPARTMENT OF THE ARMY
WASHINGTON, D.C., 30 SEPTEMBER 1992

Organizational, Direct and General Support Repair Parts
And Special Tools List

**AIR CONDITIONER, VERTICAL COMPACT,
9,000 BTU/HR, 208 VOLTS, 3-PHASE, 50/60 HZ
TIERNAY MODEL TM-9KV-208-3-60 NSN 4120-01-091-9672
KECO MODEL F9000T3-2 NSN 4120-01-264-6295**

Approved for public release; distribution is unlimited

TM 5-4120-339-24P, 18 December 1981, is changed as follows:

1. Remove and insert pages as indicated below. New or changed text material is indicated by a vertical bar in the margin. An illustration change is indicated by a miniature pointing hand.

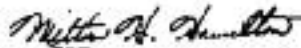
Remove pages
13 and 14
39 and 40
49 and 50
53 and 54

Insert pages
13 and 14
39 and 40
49 and 50
53 and 54

2. Retain this sheet in front of manual for reference purposes.

By Order of the Secretary of the Army:

Official:



MILTON H. HAMILTON
Administrative Assistant to the
Secretary of the Army
02608

GORDON R. SULLIVAN
General, United States Army
Chief of Staff

DISTRIBUTION:

To be distributed in accordance with DA Form 12-25E, qty rqr block no. 0170, requirements for TM 5-4120-339-24P.

CHANGE }
NO. 1 }

HEADQUARTERS
DEPARTMENT OF THE ARMY
WASHINGTON, D.C 9 January 1989

**ORGANIZATIONAL, DIRECT AND
GENERAL SUPPORT REPAIR PARTS AND
SPECIAL TOOLS LIST
FOR
AIR CONDITIONER, VERTICAL COMPACT,
9,000 BTU/HR, 208 VOLTS, 3-PHASE, 50/60 HZ**

**TIERNAY MODEL TM-9KV-208-3-60 NSN 4120-01-091-9672
KECO MODEL F9000T3-2 NSN 4120-01-264-6295**

TM 5-4120-339-24P, 18 December 1981, is changed as follows:

1. Remove and insert pages as indicated below. New or changed text material is indicated by a vertical bar in the margin. An illustration change is indicated by a miniature pointing hand.

Remove pages

i/ii
3 and 4
6 through 16
19 through 26
31 and 32
35 through 40
43 and 44
51 through 54

Insert pages

i/ii
3 and 4
6 through 16
19 through 26
31 and 32
35 through 40
43 and 44
51 through 54

2. Retain this sheet in front of manual for reference purposes.

By Order of the Secretary of the Army:

CARL E. VUONO
*General, United States Army
Chief of Staff*

Official:

WILLIAM J. MEEHAN, II
*Brigadier General United States Army
The Adjutant General*

DISTRIBUTION:

To be distributed in accordance with DA Form 12-25A, Unit, Direct and General Support Maintenance requirements for Air Conditioner, Vertical Compact, 9,000 BTU, 208V, 50/60HZ, 3PH (TM9KV-208-3-60).

TECHNICAL
TM5-4120-339-24P

HEADQUARTERS
DEPARTMENT OF THE ARMY
WASHINGTON, D.C., 18 December 1981

**ORGANIZATIONAL, DIRECT AND
GENERAL SUPPORT REPAIR PARTS AND
SPECIAL TOOLS LIST
FOR
AIR CONDITIONER, VERTICAL COMPACT,
9,000 BTU/HR, 208 VOLTS, 3-PHASE, 50/60 HZ**

**TIERNAY MODEL TM-9KV-208-3-60 NSN 4120-01-091-9672
KECO MODEL F9000T3-2 NSN 4120-01-264-6295**

Current as of 25 August 1981

REPORTING ERRORS AND RECOMMENDING IMPROVEMENTS

You can help improve this manual. If you find any mistake or if you know of a way to improve the procedures, please let us know. Mail your letter, DA Form 2028 (Recommended Changes to Publications and Blank Forms), or DA Form 2028-2 located in the back of this manual direct to: Commander, U.S. Army Troop Support Command, ATTN: AMSTR-MCT S, 4300 Goodfellow Boulevard, St. Louis, MO 63120-1798. A reply will be furnished directly to you.

TABLE OF CONTENTS

	Listing Pages	Illus. Figure
Section I. Introduction.....	1	
Section II. Repair Parts list	7	
Group 01 Panels, Covers and grilles	7	1
Data Plates and Covers	11	2
Group 02 Fan Motor and Fans.....	13	3
Group 03 Heating System	15	4
Group 04 Control Panel Assembly.....	17	5
Wiring Harness	19	6
Junction Box, Relays Circuit Breaker and Rectifier	21	7
Junction Box, Terminal Boards, Fuse Blocks and Fuses	25	8
Wiring Harness, 13220E6707.....	29	9
Wiring Harness, 13220E6708.....	29	10
Electrical Installation	31	11
Wiring Harness, 13214E3587.....	33	12
Wiring Harness, 13218E9902.....	35	13
Wiring Harness, 13220E6709.....	37	14
Group 05 Refrigerant Compressor, Coil, and Tubing	39	15
Refrigerant Dehydrator and Valves	43	16
Group 06 Casing Assembly	47	17
Section III. Special Tools list (Not applicable)		
Section IV. NSN, Part No. Index	49	

Change 1 i/ii (blank)

SECTION I. INTRODUCTION

1. Scope.

This manual lists repair parts, special tools, test, measurement, and diagnostic equipment (TMDE), and other support equipment required for operation and performance of organizational, Direct and General Support maintenance of Air Conditioner, Vertical Compact, 9,000 BTU/HR, 208 volts, 3-phase, 5-/60 Hz.

2. General

a. Section II-Repairs Parts List. A list of repair parts authorized for use in the performance of maintenance. The list also includes parts which must be removed for replacement of the authorized parts. Parts lists are composed of functional groups in ascending numerical sequence, with the parts in each group listed in figure and item number sequence. Bulk materials are listed in NSN sequence, as the last group in Section 11.

b. Section III - Special Tools List. Not applicable.

c. Section IV National Stock Number and Part Number Index. A list, in National item identification number (NIIN) sequence of all National Stock Numbers (NSN) appearing in the listings, followed by a list, in alphanumeric sequence, of all part numbers appearing in the listings. National Stock Number and part numbers are cross-referenced to each illustration figure and item number appearance.

3. Explanation of Columns.

The following provides an explanation of columns found in the tabular listings.

a. Illustration. This column is divided as follows:

(1) Figure Number. Indicates the figure number of the illustration in which the item is shown.

(2) Item Number. The number used to identify each item called out in the illustration.

b. Source, Maintenance and Recoverability Codes (SMR).

(1) Source Code. Source codes are assigned to support items to indicate the manner of acquiring support items for maintenance, repair or overhaul of end items. Source codes are entered in the first and second positions of the Uniform SMR Code format as follows:

Code	Definition
PA	Item procured and stocked for anticipated or known usage.
PB	Item procured and stocked for insurance purpose because essentially dictates that a minimum quantity be available in the supply systems.
PC	Item procured and stocked and which otherwise would be coded PA except that it is deteriorative in nature.
PD	Support item, excluding support equipment, procured for initial issue or outfitting and stocked only for subsequent or additional initial issues or outfitting. Not subject to automatic replenishment.
PE	Support equipment procured and stocked for initial issue or outfitting to specified maintenance repair activities.
PF	Support equipment which will not be stocked but which will be centrally procured on demand.
PG	Item procured and stocked to provide for sustained support for the life of the equipment. It is applied to an item peculiar to the equipment which, because of the probable discontinuance or shutdown of production facilities, would prove uneconomical to reproduce at a later time.
KD	An item of a depot overhaul/repair kit and not purchased separately. Depot kit defined as a kit that provides items required at the time of overhaul or repair.
KF	An item of a maintenance kit and not purchased separately. Maintenance kit defined as a kit that provides an item that can be replaced at organizational or intermediate levels of maintenance.

- KB Item included in both a depot overhaul/repair kit and a maintenance kit.
- MO Item to be manufactured or fabricated at organizational level.
- MF Item to be manufactured or fabricated at the direct support maintenance level.
- MB Item to be manufactured or fabricated at the general support maintenance level.
- MD Item to be manufactured or fabricated at the depot maintenance level.
- AO Item to be assembled at organizational level.
- AF Item to be assembled at direct support maintenance level.
- AH Item to be assembled at general support maintenance level.
- AD Item to be assembled at depot maintenance level.
- XA Item is not procured or stocked because the requirements for the item will result in the replacement of the next higher assembly.
- XB Item is not procured or stocked. If not available through salvage, requisition.
- XD A support item that is not stocked. When required, item will be procured through normal supply channels.

NOTE

Cannibalization or salvage may be used as a source of supply for any Items source coded above except those coded XA or XD.

(2) Maintenance Code. Maintenance codes are assigned to indicate the levels of maintenance authorized to use and repair support items. The maintenance codes are entered in the third and fourth positions of the Uniform SMR Code format as follows:

(a) The maintenance code entered in the third position will indicate the lowest maintenance level authorized to remove, replace and use the support item. The maintenance code entered in the third position will indicate one of the following levels of maintenance.

Code	Application/Explanation
C	Crew or operator maintenance performed within organizational maintenance.
O	Support item is removed, replaced, used at the organizational level.
I	Support item is removed, replaced, used by the direct support element of integrated direct support element of integrated direct support maintenance.
F	Support item is removed, replaced, used at the direct support level.
H	Support item is removed, replaced, used at the general support level.
D	Support items that are removed, replaced, used at depot, mobile depot, specialized repair activity only.

NOTE

Codes "I" and "F" will be considered the same by direct support units.

(b) The maintenance code entered in the fourth position indicates whether the item is to be repaired and identifies the lowest maintenance level with the capability to perform complete repair (i.e., all authorized maintenance functions). This position will contain one of the following maintenance codes.

Code	Application/Explanation
O	The lowest maintenance level capable of complete repair of the support item is the organizational level.
F	The lowest maintenance level capable of complete repair of the support item is the direct support level.

- H The lowest maintenance level capable of complete repair of the support Item is the general support level.
- D The lowest maintenance level capable of complete repair of the support item is the depot level.
- L Repair restricted to designated specialized repair activity.
- Z Nonreparable. No repair is authorized.
- B No repair is authorized. The item may be reconditioned by adjusting, lubricating, etc., at the user level. No parts or special tools are procured for the maintenance of this item.

- L Repairable item. Repair, condemnation, and disposal not authorized below depot specialized repair activity level.
- A Item requires special handling or condemnation procedures because of specific reasons (I.E., precious metal content, high dollar value, critical material or hazardous material). Refer to appropriate manuals/directives for specific Instructions.

c. National Stock Number. Indicates the National Stock Number assigned to the item and will be used for requisitioning purposes.

d. Part Number. Indicates the primary number used by the manufacturer which controls the design and characteristics of the item by means of its engineering drawings, specifications standards, and inspection requirements to identify an item or range of items.

Note

When a stock number is requisitioned the repair part received may have a different part number than the part being replaced.

e. Federal Supply Code for Manufacturer (FSCM). The FSCM is a 5-digit numeric code listed in SB 708-42 each is used to identify the manufacturer, distributor, or Government agency etc.

f. Description. Indicates the Federal item name and if required, a minimum description to identify the item. Items that are included in kits with the quantity of each item in the kit or set indicated in the quantity incorporated in unit column. When the part to be used differs between serial numbers of the same model, the effective serial numbers are shown as the last line of the description. In the Special Tools List, the initial basis of issue (BOI) appears as the last line in the entry for each special tool, TMDE, and support equipment. When density of equipments supported exceeds density spread indicated in the basis of issue, the total authorization is increased accordingly.

(3) Recoverability Code. Recoverability codes are assigned to support items to indicate the disposition action on unserviceable items. The recoverability code is entered in the fifth position of the Uniform SMR Code format as follows:

Recoverability Codes	Definition
Z	Nonreparable item. When unserviceable, condemn and dispose at the level indicated in Position 3.
O	Repairable item. When uneconomically repairable, condemn and dispose at organizational level.
F	Repairable item. When uneconomically repairable, condemn and dispose at the direct support level.
H	Repairable item. When uneconomically repairable, condemn and dispose at the general support level.
D	Repairable item. when beyond lower level repair capability, return to depot. Condemnation and disposal not authorized below depot level.

g. Unit of Measure (U/M). Indicates the standard of the basic quantity of the listed items as used in performing the actual maintenance function. This measure is expressed by a two character alphabetical abbreviation (e.g., ea, in, pr, etc.). When the unit of measure differs from the unit of issue, the lowest unit of issue that will satisfy the required units of measure will be requisitioned.

h. Quantity incorporated in Unit. Indicates the quantity of the item used in the breakout shown on the illustration figure, which is prepared for a functional group, subfunctional group, or an assembly. A "V" appearing in this column in lieu of a quantity indicates that no specific quantity is applicable, (e.g., shims, spacers, etc.).

4. Special Information.

a. Usable on codes are shown in the description column. Uncoded items are applicable to all models. Identification of the usable on codes used in this publication are:

Code	Used on
DGE	Tiernay Model TM-9KV-208-3-60
EKQ	Keco Model F9000T3-2

b. Repair kits and gasket sets appear as the last entries in the repair parts listing for the figure in which its parts are listed as repair parts or are listed at the end of the repair parts listing for the last figure containing parts of the kit.

c. The following publications pertain to the Air Conditioner and its components.

TM 5-4120-339-14	Operator, Organizational, Direct and General Support Maintenance Manual.
------------------	--

5. How to Locate Repair Parts.

a. When National Stock Number or Part Number Is Unknown:

(1) First. Using the table of contents, determine the functional group within which the repair part belongs. This is necessary since illustrations are prepared for functional groups, and listings are divided into the same groups.

(2) Second. Find the illustration covering the functional group to which the repair part belongs.

(3) Third. Identify the repair part on the illustration and note the illustration figure and item number of the repair part.

(4) Fourth. Using the Repair Parts Listing, find the figure and item number noted on the illustration.

b. When the National Stock Number or Part Number Is Known.

(1) First. Using the Index of National Stock Numbers and Part Numbers, find the pertinent National stock number or part number. This index is in ascending NSN sequence followed by a list of part numbers in ascending alphanumeric sequence, cross-referenced to the illustration figure number and item number.

(2) Second. After finding the figure and item number, locate the figure and item number in the repair parts list.

6. Abbreviations:

Abbreviations	Explanation
<i>deg.</i>	<i>degree(s)</i>
<i>ea.</i>	<i>each</i>
<i>ft.</i>	<i>feet (foot)</i>
<i>grp.</i>	<i>group</i>
<i>ld.</i>	<i>inside diameter</i>
<i>ln.</i>	<i>Inch(es)</i>
<i>lg.</i>	<i>long (length)</i>
<i>mtg.</i>	<i>mounting(s)</i>
<i>No.</i>	<i>Number(s)</i>
<i>od.</i>	<i>outside diameter</i>
<i>u/w</i>	<i>used with</i>

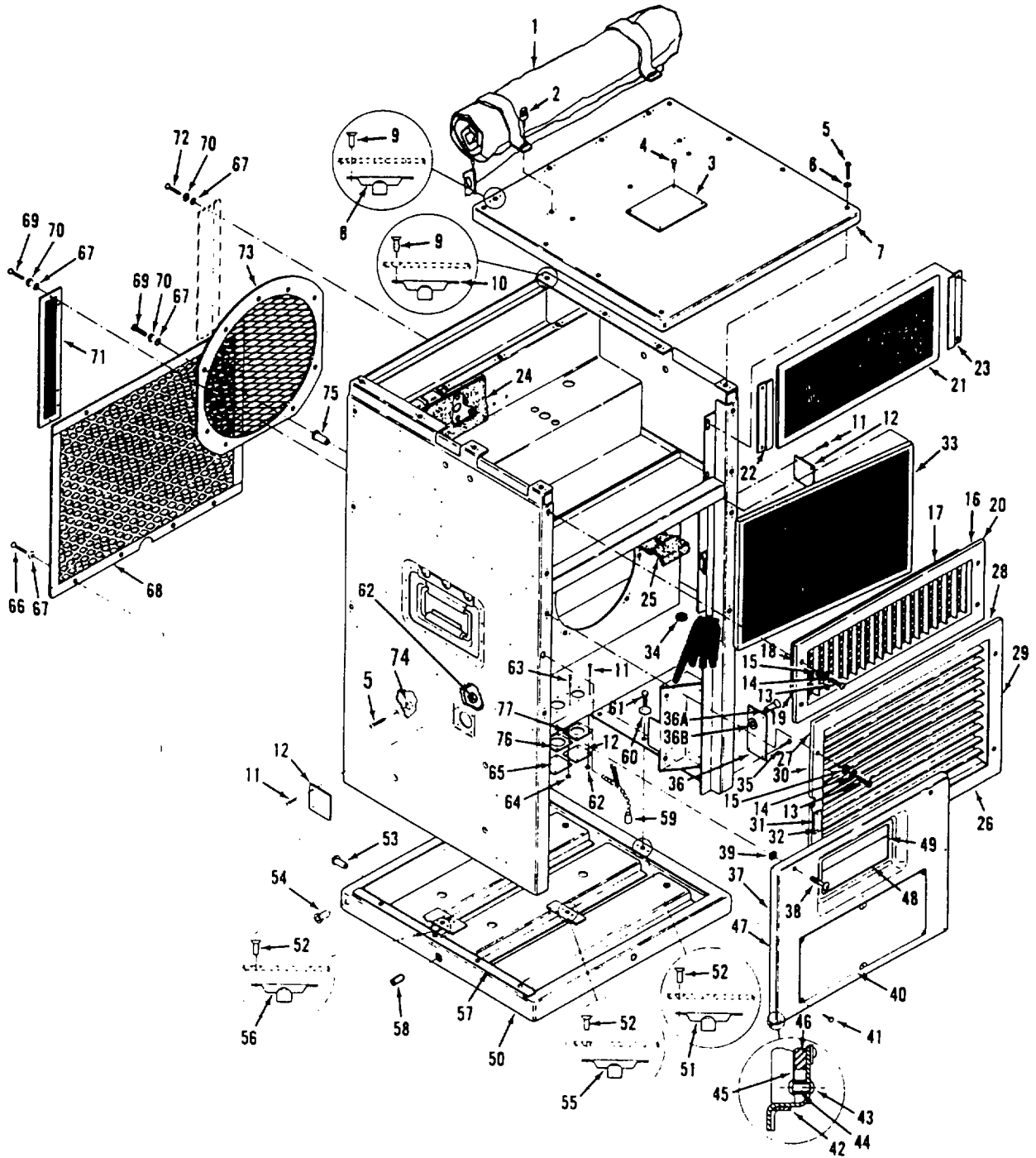


Figure 1. Panels, Cover and Grilles

(1) ILLUSTRATION		(2)	(3)	(4)	(5)	(6)	(7)	(8)
(a) FIG NO.	(b) ITEM NO.	SMR CODE	NATIONAL STOCK NUMBER	FSCM	PART NUMBER	DESCRIPTION USABLE ON CODE	U/M	QTY INC IN UNIT
						GROUP 01 PANELS, COVERS AND GRILLES		
1	1	XBOZZ	97403	13214E3703		COVER,AIR CONDITIONER.....	EA	1
1	2	PAOZZ	5325-01-033-0846	97403	13214E3647-3	FASTENER,TURNBUTTON.....	EA	2
1	3	XBOZZ	96906	MS63045		PLATE,IDENTIFICATION..... DGE	EA	1
1	3	XBOZZ	94833	120K0636		PLATE,IDENTIFICATION..... EKQ	EA	1
1	4	PAOZZ	5320-00-932-1972	97403	13214E3789-2	RIVET,BLIND.....	EA	4
1	5	PAOZZ	5305-00-984-6194	96906	MS35206-246	SCREW,MACHINE.....	EA	24
1	6	PAOZZ	5330-01-082-5474	97403	13220E5281	SEAL,SPECIAL.....	EA	20
1	7	XBOOO	97403	13214E3384		PANEL, TOP.....	EA	1
1	8	PAOZZ	5310-00-623-5991	80205	NAS1031A08	NUT,SELF-LOCKING.....	EA	4
1	9	PAOZZ	5320-00-117-6938	96906	MS20426AD3-4	RIVET,SOLID.....	EA	12
1	10	PAOZZ	5310-00-680-4985	80205	NAS1031A06	NUT,SELF-LOCKING.....	EA	2
1	11	PAOZZ	5305-00-889-2999	96906	MS35206-217	SCREW,MACHINE.....	EA	12
1	12	XBOZZ	97403	13214E3471-1		COVER,ALTERNATE POWER CONNECTION.....	EA	3
1	13	PAOZZ	5305-00-984-6195	96906	MS35206-247	SCREW,MACHINE.....	EA	8
1	14	PAOZZ	5310-00-045-3299	96906	MS35338-42	WASHER,LOCK.....	EA	8
1	15	PAOZZ	5310-00-821-2366	97403	13214E3469	WASHER,FLAT.....	EA	8
1	16	XBOZZ		97403	13214E3712	GRILLE,METAL.....	EA	1
1	17	MOOOO		81346	ASTM-D-1056 SBE-42-CF2 0.25 STK	SEALING STRIP MFG FROM ASTM-D-1056,1/4 INX 112 IN. X 15 IN.LG.....	S	V
1	18	MOOOO		81346	ASTM-D-1056 SBE-42-CF2 0.125 STK	SEALING STRIP MFG FROM ASTM-D-1056,1/8 INX 3/4 IN. X 1.19 IN.LG.....	SH	V
1	19	MOOOO		81346	ASTM-D-1056 SBE-42-CF2 0. 125 THK	SEALING STRIP MFG FROM ASTM-D-1056,1/8 INX 3/4 IN. X 4.00 IN LG.....	SH	V
1	20	MOOOO		81346	ASTM-D-1056 - SBE-42-CF2 0.125THK	SEALING STRIP MFG FROM ASTM-D-1056, 1/8 IN X 3/4 IN. X 7.38 IN LG.....	SH	V
1	21	XBOZZ		97403	13220E5413-2	ELIMINATOR,MIST.....	EA	1
1	22	XBOZZ		97403	13220E5601	BRACKET,LEFT SIDE.....	EA	1
1	23	XBOZZ		97403	13220E5600	BRACKET,RIGHT SIDE.....	EA	1
1	24	MOOOO		81349	MIL-I-14511 0.500	INSULATION MFG FROM 0.500 THK.....	SH	V
1	25	MOOOO		81349	MIL-I-14511 0.250	INSULATION MFG FROM 0.250 IN. THK.....	SH	V
1	26	XBOZZ		97403	13214E3713	GRILLE,AIR RETURN.....	EA	1
1	27	MOOOO		81346	ASTM-D-1056 SBE-42-CF2 1/8 STK	SEALING STRIP MFG FROM ASTM-D-1056,1/8 INX 3/4 IN. X 1.19 IN.LG.....	SH	V
1	28	MOOOO		81346	ASTM-D-1056 SEE-42-CF2 0.25 STK	SEALING STRIP MFG FROM ASTM-D-1056,114 INX 1/2 IN. X 15.00 IN.LG.....	SH	V
1	29	MOOOO		81346	ASTM-D-1056s SEE-42-CF2 0. 125STK	SEALING STRIP MFG FROM ASTM-D-1056,118 INX 3/4 IN. X 10.62 IN LG.....	SH	V
1	30	MOOOO		81346	ASTM-D-1056 SEE-42-CF2 0. 125 STK	SEALING STRIP MFG FROM ASTM-D-1056,1/8 INX 3/4 IN. X 7.25 IN.LG.....	SH	V
1	31	PAOZZ	9905-01-053-5362	97403	13217E2344	PLATE,INSTRUCTION.....	EA	1
1	32	PAOZZ	5320-00-005-6279	96906	MS20470AD4-4-5	RIVET,SOLID..... DGE	EA	2
1	32	PAOZZ		96906	MS20470AD4-3-5	RIVET,SOLID..... EKQ	EA	2
1	33	PAOZZ	4130-00-901-0323	97403	13214E3699-1	FILTERELEMENT,AIR.....	EA	1
1	34	PAOZZ	5325-00-254-4718	97403	13211E8222	GROMMET,NONMETALLIC.....	EA	1
1	35	PAOZZ	5305-00-889-2999	96906	MS35206-217	SCREW,MACHINE..... DGE	EA	12

(1) ILLUSTRATION		(2)	(3)	(4)	(5)	(6)	(7)	(8)
(a) FIG NO.	(b) ITEM NO.	SMR CODE	NATIONAL STOCK NUMBER	FSCM	PART NUMBER	DESCRIPTION USABLE ON CODE	U/M	QTY INC IN UNIT
1	36	XBOZZ		97403	13218E7076	COVER.....	EA	1
1	36A	PAOZZ		97403	13215E9909-10	STUD,TURNLOCKFASTENER..... EKQ	EA	2
1	368	PAOZZ		97403	13211E8386	WASHER..... EKQ	EA	2
1	37	XBOZZ		97403	13220E67520-4	PANEL,LOWER..... DE	EA	1
1	37	XBOZZ		97403	13222E7285-2	PANEL,LOWER..... EKQ	EA	1
1	38	PAOZZ	5305-00-283-4649	94222	12-11-713-11	SCREW,PANEL.....	EA	2
1	39	PAOZZ	5310-00-880-9344	97403	13211E8337	WASHER,LOCK.....	EA	2
1	40	XBOZZ		97403	13218E7079	PLATE,INFORMATION.....	EA	1
1	41	PAOZZ	5320-00-932-1972	97403	13214E3789-2	RIVET,BLIND.....	EA	6
1	42	MOOOO		81346	ASTM-D-1056 SEE-42-CF2 0.06 STK	GASKET MFG FROM 1116 IN STOCK.....	SH	V
1	43	PAOZZ	5320-00-874-4471	07707	AD46H	RIVET,BLIND.....	EA	6
1	44	XBOZZ		97403	13220E6720/9	TUBING..... DGE	EA	6
1	44	XBOZZ		97403	13222E728519	TUBING..... EKQ	EA	6
1	45	XBOZZ		97403	13220E672	PLATE,INFORMATION..... DGE	EA	1
1	45	XBOZZ		97403	13222E7284	PLATE,INFORMATION WIRING DIAGRAM..... EKQ	EA	1
1	46	MOOOO		81349	MIL-I-14511 0.250	INSULATIONMFGFROM0.250 IN THK.....	EA	V
1	47	MOOOO		81349	MIL-I-14511 0.500	INSULATION MFG FROM 0.500 IN THK.....	EA	V
1	48	MOOOO		81346	ASTM-D-1058 SEE-42-CF2 0.125 STK	GASKET MFG FROM 0.125 IN.STOCK.....	SH	V
1	49	MOOOO		81346	ASTM-D-1056 SEE-42-CF2 0.125 STK	GASKETMFGFROM 0.125 IN.STOCK.....	SH	V
1	50	XBOZZ		97403	13214E3386	PANEL,BOTTOM..... EA	1	
1	51	PAFZZ	5310-00-777-5793	96906	MS21059L4	NUT,SELF-LOCKING..... DGE	EA	8
1	51	PAFZZ		80205	NAS1031A4	NUT,SELF-LOCKING..... EKQ	EA	8
1	52	PAFZZ	5320-00-117-8938	96906	MS20428AD3-4	RIVET.SOLID.....	EA	16
1	53	PAFZZ	5310-00-852-1115	80205	NAS1329S3KB80	NUT,BLINDRIVET.....	EA	4
1	54	PAFZZ	5310-00-143-6203	80205	NAS1329S08KB75	NUT,BLIND RIVET.....	EA	2
1	55	PAFZZ	5310-00-623-5989	80205	NAS103IA3	NUT.SELF-LOCKING.....	EA	1
1	56	PAFZZ	5310-00-623-5991	80205	NAS1031A08	NUT,SELF-LOCKING.....	EA	2
1	57	MFFFF		81346	ASTM-D-1056 SEE-42-CF2 0.06 STK	SEALING STRIP MFG FROM ASTM-D-1058,1/16 INX 7/8 IN X 16-3/4 IN.LG..... S	H	V
1	58	PAOZZ	4730-00-007-9399	97403	13211E8178	PLUG,PIPE.....	EA	4
1	59	PAOZZ	4130-00-922-Z439	97403	13211E8305	PENDANT WITH SLEEVE.....	EA	1
1	60	PAOZZ	5310-00-809-4058	96906	MS27183-10	WASHER,FLAT.....	EA	8
1	61	PAOZZ	5305-00-068-0505	96906	MS90728-5	SCREW,CAP,HEXAGON.....	EA	8
1	62	PAOZZ	5310-00-088-0551	96906	MS21044N04	NUT.....	EA	12

Change 1 8

(1) ILLUSTRATION		(2)	(3)	(4)	(5)	(6)	(7)	(8)
(a) FIG NO.	(b) ITEM NO.	SMR CODE	NATIONAL STOCK NUMBER	FSCM	PART NUMBER	DESCRIPTION USABLE ON CODE	U/M	QTY INC IN UNIT
1	63	PAOZZ	5305-00-984-4992	98906	MS35206-232	SCREW,MACHINE	EA	4
1	64	PAOZZ	5310-00-081-8087	96906	MS21044-N06	NUT,SELF-LOCKING	EA	4
1	65	XBOZZ		97403	13214E3471-2	COVER	EA	1
1	66	PAOZZ	5305-00-993-1848	96906	MS35207-265	SCREW,MACHINE	EA	6
1	67	PAOZZ	5310-00-821-2368	97403	13214E3469	WASHER,FLAT.....	EA	24
1	68	XBOZZ		97403	13214E3533	GUARD,CONDENSER COIL.....	EA	1
1	69	PAOZZ	5305-00-984-8195	96906	MS35206-247	SCREW,MACHINE	EA	13
1	70	PAOZZ	5310-00-045-3299	97403	MS35338-42	WASHER,LOCK.....	EA	18
1	71	XBOZZ		97403	13214E3616	SCREEN,FRESH AIR	EA	1
1	72	PAOZZ	5305-00-984-8197	96906	MS35206-249	SCREW,MACHINE	EA	5
1	73	XBOZZ		97403	13214E3612	GUARD,FAN	EA	1
1	74	PAOZZ	5310-00-811-3494	96906	MS21044N08	NUT,SELF-LOCKING	EA	4
1	75	PAOZZ	5310-01-036-4687	96906	MS27130-S15K	NUT,PLAIN,BLIND RIVET	EA	8
1	76	PAOZZ	5330-00-267-0697	96906	MS51007-11	GASKET,RUBBER..... DGE	EA	1
1	76	PAOZZ		96906	MS61007-10	GASKET,RUBBER..... EKQ	EA	1
1	77	PAOZZ	5330-00-836-4355	96906	MS51007-7	GASKET,RUBBER.....	EA	1

Change 1 9

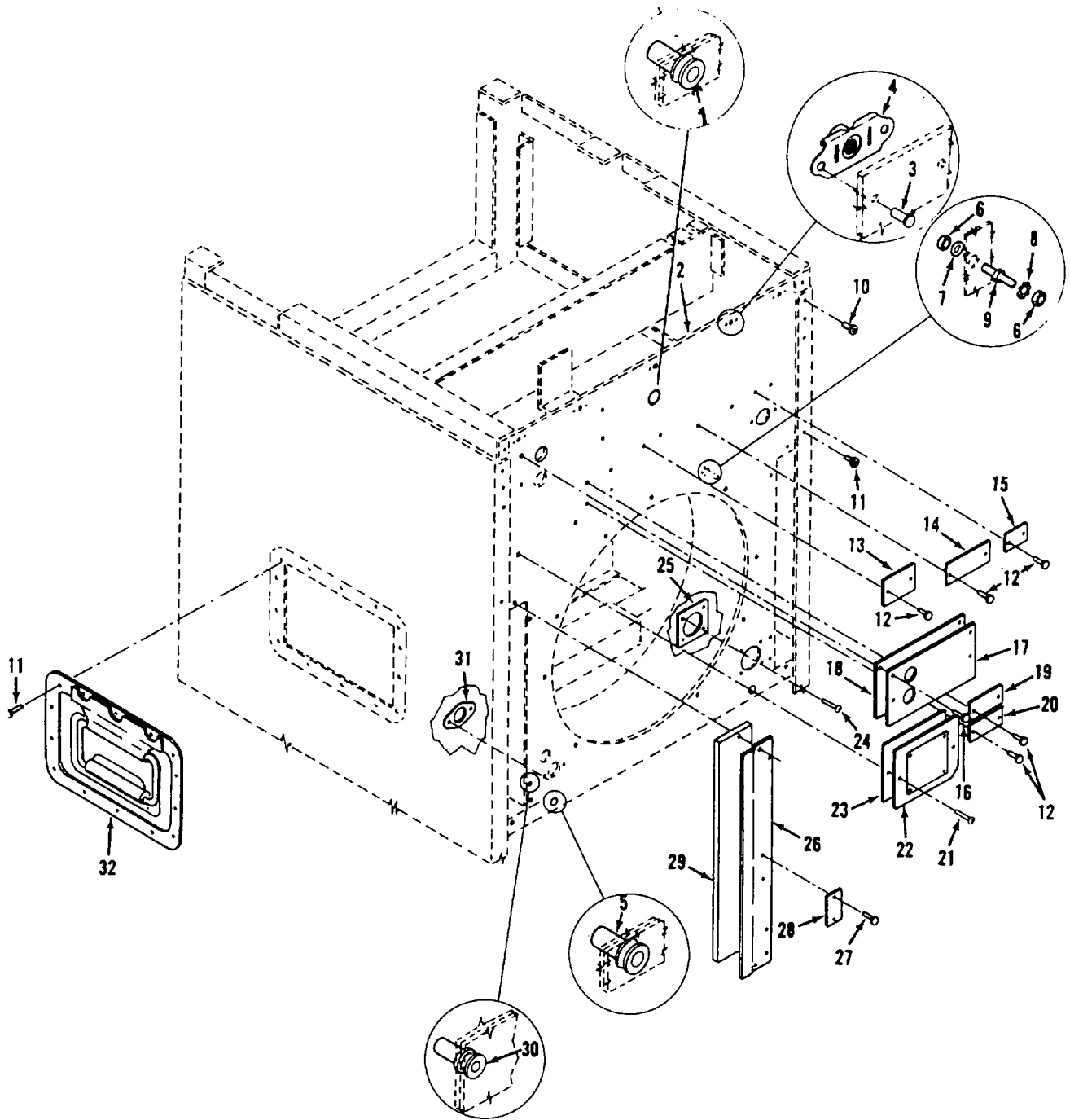


Figure 2. Data Plates and Covers

(1) ILLUSTRATION		(2)	(3)	(4)	(5)	(6)	(7)	(8)
(a) FIG NO.	(b) ITEM NO.	SMR CODE	NATIONAL STOCK NUMBER	FSCM	PART NUMBER	DESCRIPTION USABLE ON CODE	U/M	QTY INC IN UNIT
2	1	PAOZZ	5310-01-045-86813	96908	MS27130-S50K	NUT,PLAIN,BLIND RIVET	EA	1
2	2	XBFFF		97403	13214E3686	PANEL,BACK	EA	1
2	3	PAFZZ	5320-00-117-6938	9690s	MS20428AD3-4	RIVET,SOLID	EA	14
2	4	PAFZZ	5310-00-823-5991	80205	NAS1031A08	NUT,SELF-LOCKING	EA	7
2	5	PAFZZ	5310-01-055-8419	95908	MS27130-S25K	NUT,BLIND,RIVET	EA	2
2	6	PAOZZ	5310-00-877-5797	96908	MS21044N3	NUT,SELF-LOCKING	EA	2
2	7	PAOZZ	5310-00-809-8546	98906	MS27183-8	WASHER,FLAT	EA	1
2	8	PAOZZ	5310-00-080-9788	96906	MS45904-80	WASHER,LOCK	EA	1
2	9	PAOZZ		97403	13222E6259-2	TERMINAL STUD	EA	1
2	10	PAFZZ	5320-00-874-4471	07707	AD45H	RIVET,BLIND	EA	6
2	11	PAFZZ	5320-00-882-8388	07707	AD43H	RIVET,BLIND	EA	32
2	12	PAOZZ	5320-00-932-1972	97403	13214E3789-2	RIVET,BLIND	EA	16
2	13	XBOZZ		97403	13218E7078	PLATE,INFORMATION	EA	1
2	14	XBOZZ		97403	13220E8723	PLATE,INFORMATION	EA	1
2	15	XBOZ	9905-00-165-7474	97403	13211E8215	PLATE,INSTRUCTION	EA	1
2	16	PAFZZ	5305-00-984-4992	96908	MS35206-232	SCREW,MACHINE	EA	4
2	17	XBOZZ		97403	13216E9520-1	PLATE,INSTRUCTION	EA	1
2	18	PAOZZ		97403	13218E9519-1	GASKET	EA	1
2	19	XBOZZ		97403	13218E7075	PLATE,INFORMATION	EA	1
2	20	XBOZZ		97403	13218E074	PLATE,INFORMATION	EA	1
2	21	PAFZZ	5305-00-889-2999	98906	MS35206-217	SCREW,MACHINE DGE	EA	2
2	21	PAFZZ		96906	MS35206-246	SCREW,MACHINE EKO	EA	2
2	22	XBOOO		97403	13218E7489	COVERACCESS	EA	1
2	23	MOOO		81346	ASTM-D-1056 SBE-42-CF2 0.125 STK	GASKET MFG FROM ASTM-D-105,0.125 IN THK STK	SH	V
2	24	PAOZZ	5305-00-140-8001	96906	MS51861-12	SCREW,TAPPING	EA	4
2	25	PAOZZ	5330-00-836-4355	96906	MS51007-7	GASKET,RUBBER	EA	1
2	26	XBOZZ		97403	13214E3615	COVER	EA	1
2	27	PAOZZ	5320-00-932-1972	97403	13214E3789-2	RIVET,BLIND	EA	2
2	28	XBOZZ	9905-01-055-0219	97403	13217E8814	PLATE,INSTRUCTION	EA	1
2	29	MOOOO		81346	ASTM-D-1056 SBE-42-CF2 0.25 STK	GASKET MFG FROM 1/4 STK	SH	V
2	30	PAFZZ	5310-01-036-0908	96908	MS27130-S14K	NUT,PLAIN,BLIND RIVET	EA	10
2	31	PAOZZ		97403	13211E8273	GASKET,THERMAL	EA	1
2	32	PAFZZ	5340-00-934-0532	98003	H561LS2RG	HANDLE	EA	2

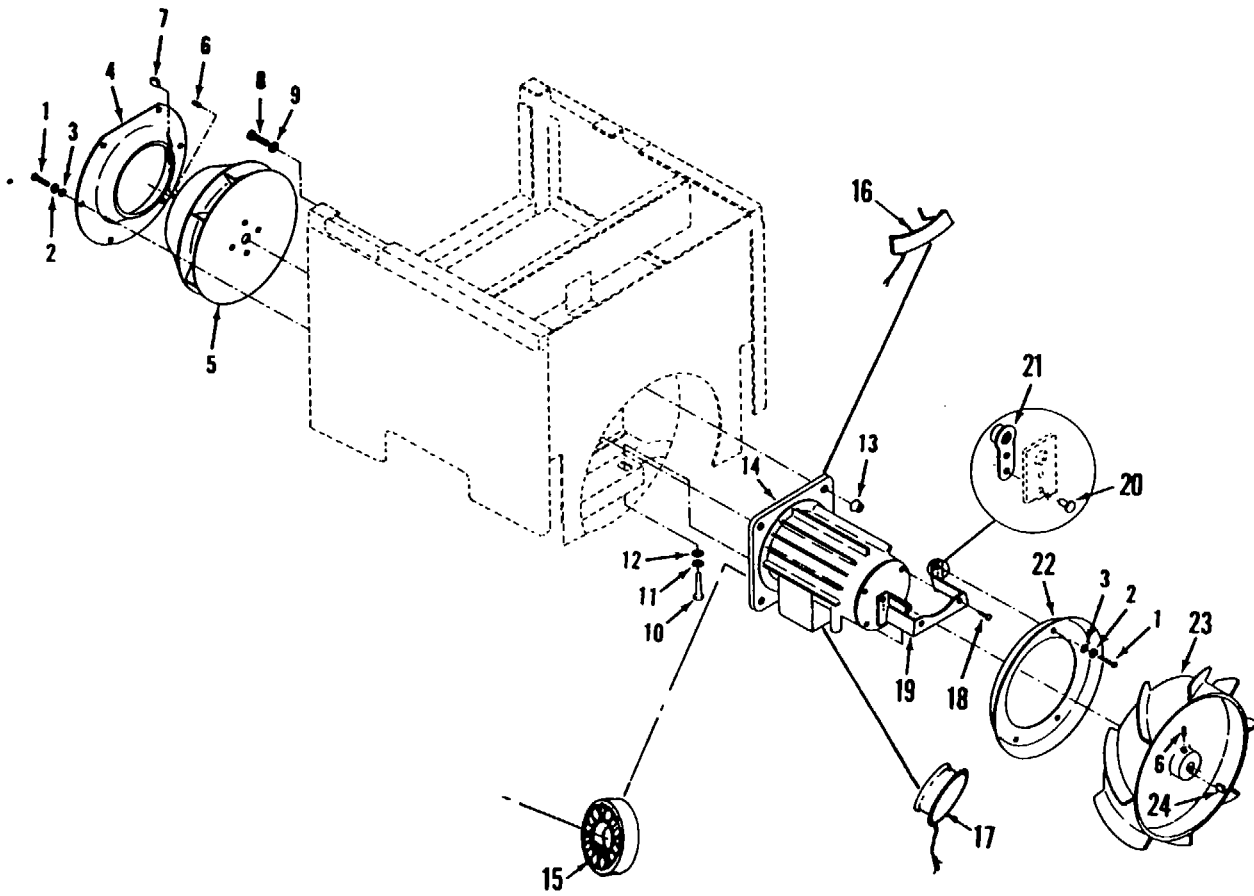


Figure 3. Fan Motor and Fans

(1) ILLUSTRATION		(2)	(3)	(4)	(5)	(6)	(7)	(8)
(a) FIG NO.	(b) ITEM NO.	SMR CODE	NATIONAL STOCK NUMBER	FSCM	PART NUMBER	DESCRIPTION USABLE ON CODE	U/M	QTY INC IN UNIT
						GROUP 02 FAN MOTOR AND FANS		
3	1	PAOZZ	5305-00-984-6194	96906	MS35206-246	SCREW, MACHINE	EA	6
3	2	PAOZZ	5310-00-045-3299	96906	MS35338-42	WASHER, LOCK.....	EA	6
3	3	PAOZZ	5310-00-809-8544	96906	MS27183-7	WASHER, FLAT.....	EA	6
3	4	XBOZZ		97403	13214E3792	RING, INLET FAN	EA	1
3	5	XBOZZ	4140-00-922-2191	97403	13214E3693	IMPELLER, FAN.....	EA	1
3	6	PAOZZ	5305-00-023-2576	96906	MS51021-62	.SETSCREW HEX SOCKET CUP POINT 1/4-20 UNC-3A X 3/4 LONG (IMPORTANT FOR BALANCE)	EA	2
3	7	PAOZZ	5315-00-730-4564	96906	MS20066-143	KEY, MACHINE	EA	1
3	8	PAOZZ	5305-00-543-2419	96906	MS90725-61	SCREW, CAP	DGE	EA 4
3	8	PAOZZ		96906	MS90725-63	SCREW, CAP	EKO	EA 4
3	9	PAOZZ	5310-00-080-6004	96906	MS27183-14	WASHER, FLAT.....	EA	4
3	10	PAOZZ	5306-00-225-8503	96906	MS90725-39	BOLT, MACHINE	EA	2
3	11	PAOZZ	5310-00-407-9566	96906	MS35338-45	WASHER, LOCK.....	EA	2
3	12	PAOZZ	5310-00-081-4219	96906	MS27183-12	WASHER, FLA T.....	EA	2
3	13	PAOZZ	5310-00-087-4652	96906	MS51922-17	NUT, SELF-LOCKING	EA	4
3	14	PAOZZ		64731	5530-15	MOTOR,AC	EA	1
3	15	PAOZZ		64731	01-010999-204	.BEARING	EA	2
3	16	PAOZZ		64731	MYH71WO	.MOTOR PROTECTOR.....	EA	1
3	16A	PAOZZ		82647	MYH28WO	.MOTOR PROTECTOR.....	EA	1
3	17	PAOZZ		96906	MS3102R-145-6P	.CONNECTOR, ELECTRICAL	DGE	EA 1
3	17	PAOZZ		96906	MS3102R20-27P	.CONNECTOR, ELECTRICAL	EKQ	EA 1
3	18	PAOZZ	5305-01-028-6271	96906	MS35191-266	SCREW, MACHINE	DGE	EA 4
3	19	XBOZZ		97403	13214E3627	BRACKET.....	DGE	EA 2
3	20	PAOZZ	5320-00-117-6939	96906	MS20426AD3-5	.RIVET, SOLID	DGE	EA 8
3	21	PAOZZ	5310-00-726-9048	96906	MS21082-08	.NUT, SELF-LOCKING	DGE	EA 4
3	22	XBOZZ		97403	13214E3623	BAFFLE	DGE	EA 1
3	23	XBOZZ		97403	13214E3694	IMPELLER, FAN AXIAL	EA	1
3	24	PAOZZ	5315-00-730-4570	96906	MS20066-145	KEY, MACHINE, SQUARE	EA	1

Change 2 13

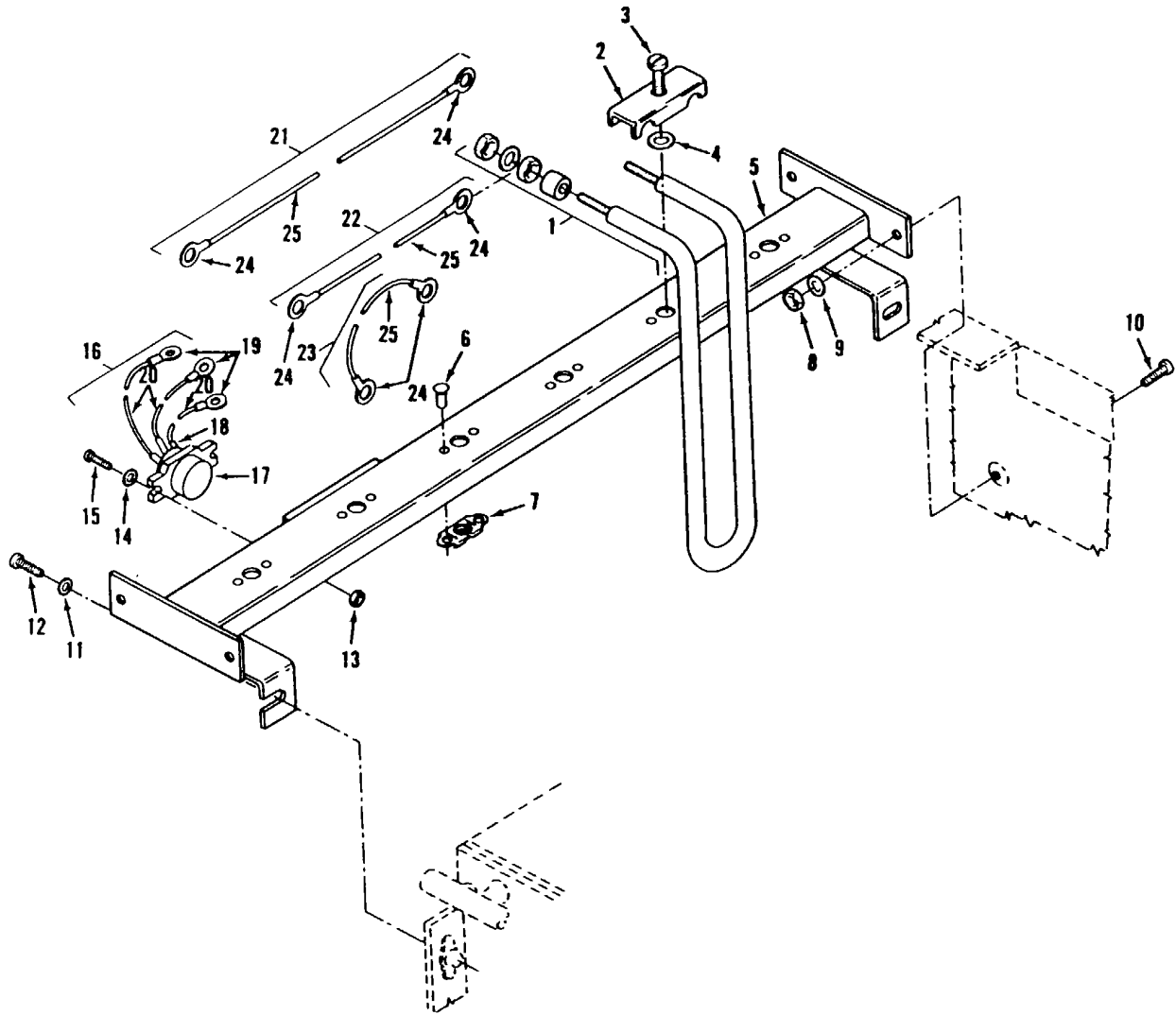


Figure 4. Heating System

(1) ILLUSTRATION		(2)	(3)	(4)	(5)	(6) DESCRIPTION	(7)	(8)
(a) FIG NO.	(b) ITEM NO.	SMR CODE	NATIONAL STOCK NUMBER	FSCM	PART NUMBER	USABLE ON CODE	U/M	QTY INC IN UNIT
						GROUP 03 HEATING SYSTEM		
4	1	PAOZZ	4540-00-110-9880	97403	13214E36898-1	HEATING ELEMENT	EA	6
4	2	PAOZZ	5340-01-039-0103	97403	13214E3418	CLAMPASSEMBLY	EA	6
4	3	PAOZZ	5305-00-183-8349	97403	13214E3744V34	.SCREW,PANEL	EA	1
4	4	PAOZZ	5310-00-880-9344	97403	13211E8337	.WASHERLOCK.....	EA	1
4	5	XBOZZ		97403	13214E3829-1	SUPPORT,HEATER	EA	1
4	6	PAOZZ	5320-00-932-1972	97403	13214E3789-2	.RIVET,BLIND	EA	12
4	7	PAOZZ	5310-00-089-6304	97403	13211E8382	.NUT,SHEETSPRING	EA	6
4	8	PAOZZ	5310-00-877-5797	96906	MS21044N3	NUT,SELF-LOCKING	EA	4
4	9	PAOZZ	5330-00-119-7503	80205	NAS1523C3F	PACKING WITH RETAINER	EA	4
4	10	PAOZZ	5305-00-989-7435	98906	MS35207-264	SCREW,MACHINE	EA	4
4	11	PAOZZ	5310-00-809-8548	96908	MS27183-8	WASHER,FLAT.....	EA	2
4	12	PAOZZ	5305-00-857-5887	96906	MS9122-03	SCREW,MACHINE	EA	2
4	13	PAOZZ	5310-00-060-2039	96906	MS21044D08	NUT	EA	2
4	14	PAOZZ	5310-00-809-8544	96906	MS27183-7	WASHER,FLAT.....	EA	2
4	15	PAOZZ	5305-00-984-8194	96906	MS35206-246	SCREW,MACHINE	EA	2
4	16	XBOZZ		97403	13214E3506	WIRINGASSY, THERMOSTAT	EA	1
4	17	PAOZZ	4130-00-106-1972	82647	MWA1255	.THERMOSTAT,HEATER	DGE	EA 1
4	17	PAOZZ		97403	13211E8265	.THERMOSTAT,HEATER	EKQ	EA 1
4	18	MOOOO		81349	MIL-I-2305315 CLASS 1	.INSULATION SLEEVING.....	FT	V
4	19	PAOZZ		96906	MS25036-108	.TERMINAL	EA	3
4	20	MOOOO		81349	M5086/1-16-9	WIRE,ELECTRICAL	FT	V
4	21	MOOOO		97403	13220E6712-11	LEAD ELECTRICAL HR 1-B TO HR 6-B.....	EA	1
4	22	MOOOO		97403	13220E6712-12	LEADELECTRICALHR2- BTO HR 5-B.....	EA	1
4	23	MOOOO		97403	13220E6712-13	LEAD ELECTRICAL HR 3-B TO HR 4-B.....	EA	1
4	24	PAOZZ	5940-00-143-4780	96906	MS25036-108	.TERMINAL,LUG.....	EA	6
4	25	MOOOZ		81349	M5088/1-16-9	.WIRE,ELECTRICAL	FT	V

Change 1 15

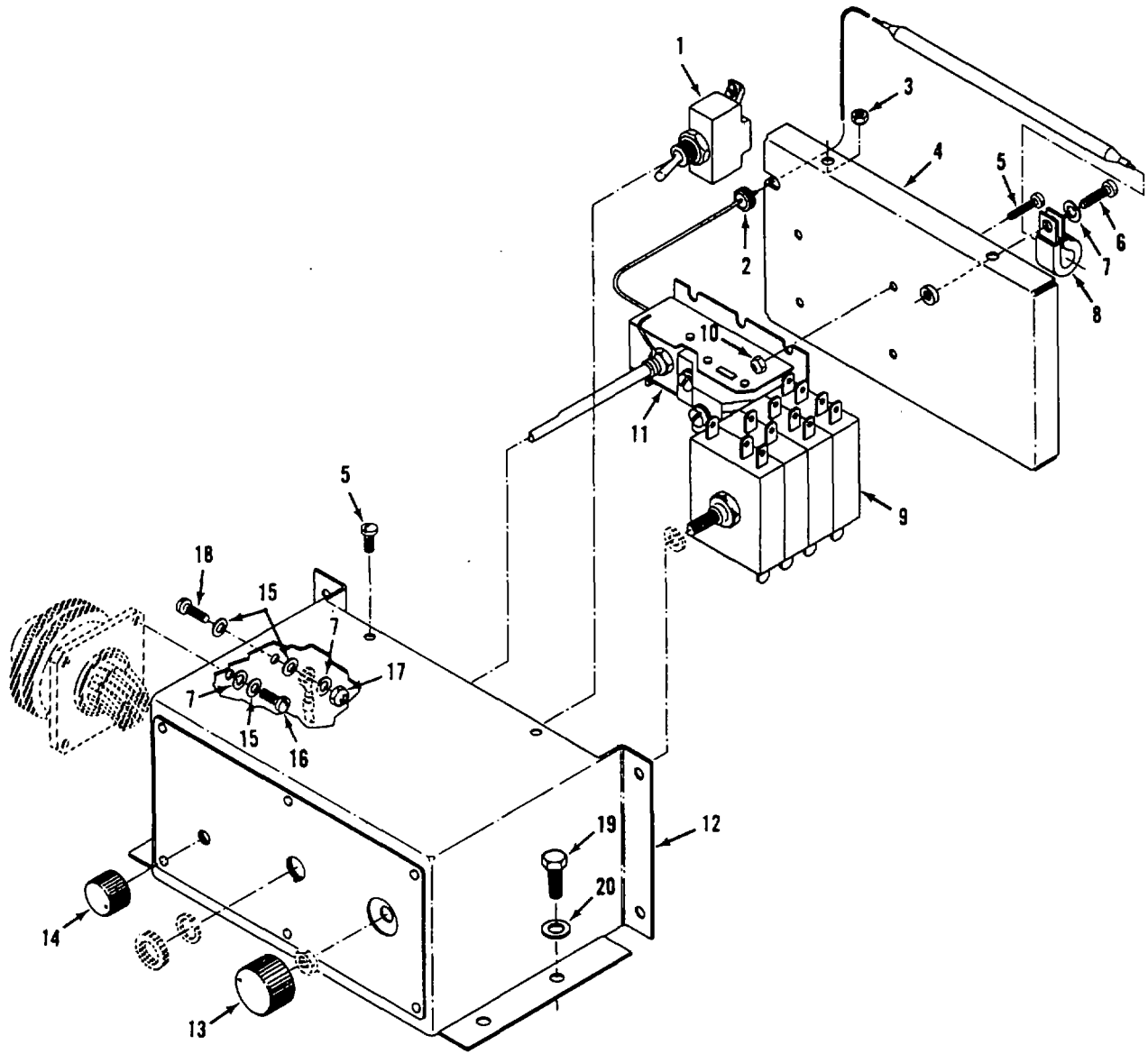


Figure 5. Control Panel Assembly

SECTION II

TM5-4120-339-24P

(1) ILLUSTRATION		(2)	(3)	(4)	(5)	(6)	(7)	(8)
(a) FIG NO.	(b) ITEM NO.	SMR CODE	NATIONAL STOCK NUMBER	FSCM	PART NUMBER	DESCRIPTION USABLE ON CODE	U/M	QTY INC IN UNIT
						GROUP 04 ELECTRICAL SYSTEM		
5		PBOZZ		97403	13219E2933	.CONTROL PANEL ASSY	EA	1
5	1	PAOZZ	5930-00-683-1628	96906	MS24523-22	.SWITCH.TOGGLE	EA	1
5	2	PAOZZ	5325-00-286-6047	96906	MS35489-1	.GROMET, NONMETALIC	EA	1
5	3	PAOZZ	5310-00-889-2549	96906	MS21045-08	.NUT,SELF-LOCKING	EA	5
5	4	XBOZZ		97403	13218E9911	.PANEL	EA	1
5	5	PAOZZ	5305-00-984-6193	96906	MS35206-245	.SCREW,MACHINE	EA	8
5	6	PAOZZ	5305-00-989-7434	96906	MS35207-243	.SCREW, MACHINE	EA	1
5	7	PAOZZ	5310-0-045-3296	96906	MS35338-43	.WASHER.LOCK	EA	5
5	8	PAOZZ	5340-00-103-2976	96906	MS21105-6	.CLAMP, LOOP	EA	1
5	9	PAOZZ	5930-00-236-2351	70611	2267A1	.SWITCH, ROTARY	EA	1
5	10	PAOZZ	5310-00-889-2549	94906	MS21045-08	.NUT SELF-LOCKING	EA	3
5	11	PAOZZ	5930-00-923-4176	92578	A19AEF-10	.SWITCH,THERMOSTATIC	EA	1
5	12	XBOZZ		97403	13218E9909	.CONTROL PANEL	EA	1
5	13	PAOZZ	5335-00-579-2896	96906	MS25165	.KNOB	EA	1
5	14	PAOZZ	5355-00-472-9354	96906	MS91528-1C4B	.KNOB	EA	1
5	15	PAOZZ	5310-00-014-5850	96906	MS27183-42	.WASHER, FLAT	EA	7
5	16	PAOZZ	5305-00-088-9044	96906	MS35207-260	.SCREW, MACHINE	EA	4
5	17	PAOZZ	5310-00-061-7326	96906	MS21045-3	.NUT,SELF-LOCKING	EA	1
5	18	PAOZZ	5035-00-989-7435	96906	MS35207-264	.SCREW, MACHINE	EA	1
5	19	PAOZZ	5305-00-150-2548	96906	MS9122-11	.SCREW, MACHINE	EA	4
5	20	PAOZZ	5310-00-809-8546	96906	MS27183-0	.WASHER, FLAT	EA	4

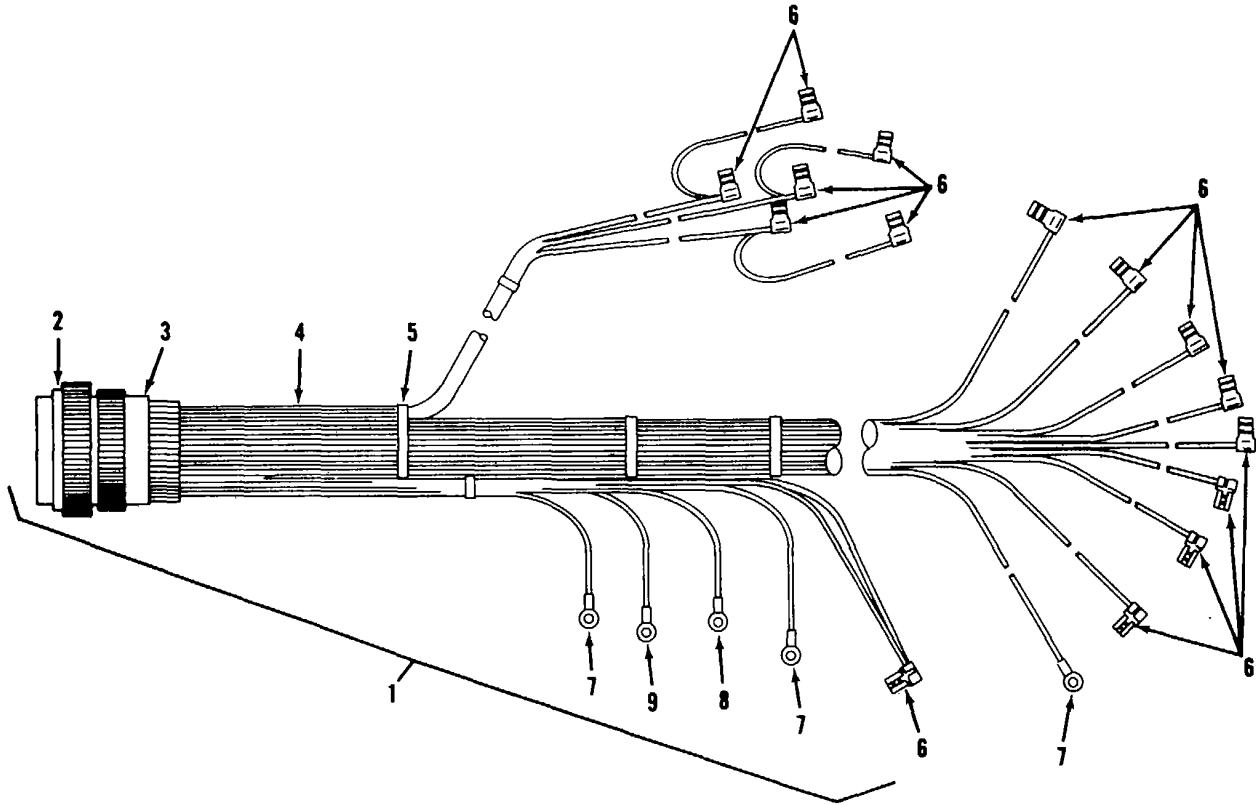
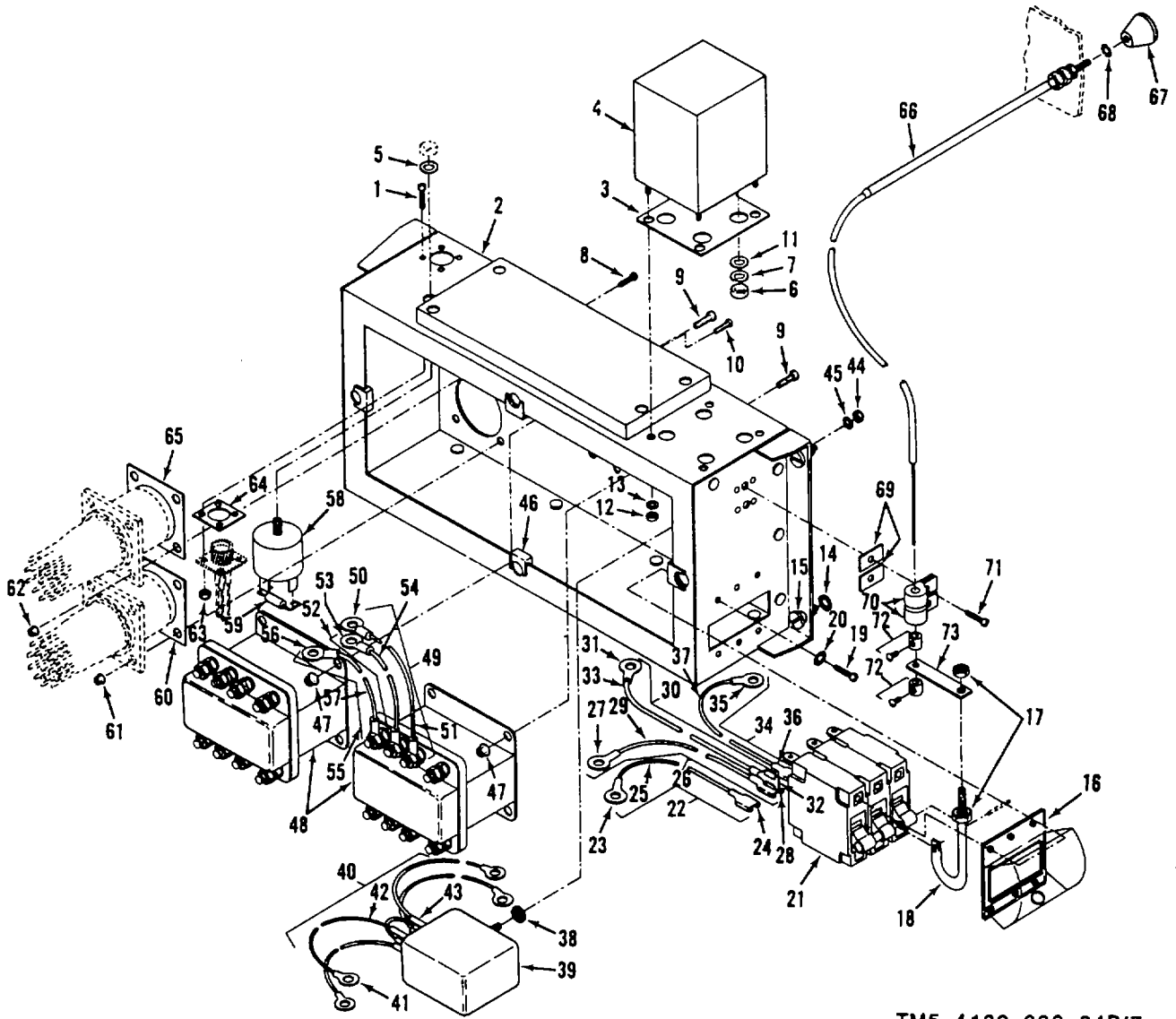


Figure 6. Wiring Harness 13214E3511

(1) ILLUSTRATION		(2)	(3)	(4)	(5)	(6)	(7)	(8)
(a) FIG NO.	(b) ITEM NO.	SMR CODE	NATIONAL STOCK NUMBER	FSCM	PART NUMBER	DESCRIPTION USABLE ON CODE	U/M	QTY INC IN UNIT
8	1	MOOOZ		97403	13214E3511	..WIRING HARNESS	EA	1
6	2	PAOZZ		77820	FP3106C28-11P	..CONNECTOR RECEPTACLE.....	EA	1
6	3	XBOZZ		96906	MS35351-12	..PLUG,ENDSEAL..... DGE	EA	1
6	4	MOOCZ		81349	M5086/1-16-9	..WIRE,ELECTRICAL	FT	V
6	5	MOOOO		81349	MIL-T-43435 TYPE 1 FINISH B	..TAPE,LACING..... DGE	FT	V
6	5	PAOZZ		98906	MS3367-2-9	..STRAP,SELF CLINCHING	EA	4
6	6	PAOZZ	5940-00-859-4475	97403	13211E8288	..TERMINAL,QUICKDISCONNECT	EA	15
6	7	PAOZZ	5940-00-283-5280	96906	MS25036-106	..TERMINAL,LUG.....	EA	3
6	8	PAOZZ	5940-00-143-4774	96906	MS25036-153	..TERMINAL,LUG.....	EA	1
6	9	PAOZZ	5940-00-143-4780	96906	MS25036-108	..TERMINAL,LUG.....	EA	1
Change 1 19								



TM5-4120-339-24P/7

Figure 7. Junction Box, Relays, Circuit Breaker and Rectifier

(1) ILLUSTRATION		(2)	(3)	(4)	(5)	(6)	(7)	(8)
(a) FIG NO.	(b) ITEM NO.	SMR CODE	NATIONAL STOCK NUMBER	FSCM	PART NUMBER	DESCRIPTION USABLE ON CODE	U/M	QTY INC IN UNIT
7		XBOZZ		97403	13219E2931	JUNCTION BOX ASSY	EA	1
7	1	PAOZZ	5305-00-889-2998	9890	MS3520 8-216	.SCREW,MACHINE	EA	4
7	2	XBOZZ		97403	13218E9895-2	JUNCTION BOX	EA	1
7	3	XBOZZ		97403	13218E9860	.GASKET,TRANSFORMER	DGE EA	1
7	3	XBOZZ		97403	13214E3685-2	INSULATION	EKQ EA	1
7	4	PAOZZ	5950-00-118-1018	97403	13214E3818-3	.TRANSFORMER,POWER	EA	1
7	5	PAOZZ	5310-00-809-3078	9s906	MS27183-11	.WASHER,FLAT	EA	4
7	6	PAOZZ	5310-00-934-9747	98908	MS35649-262	.NUT,PLAIN,HEXAGON	EA	4
7	7	PAOZZ	5310-00-045-4007	96908	MS35338-41	.WASHER,LOCK	EA	4
7	8	PAOZZ	5305-00-984-6195	96906	MS35206-247	.SCREW,MACHINE	EA	1
7	9	PAOZZ	5305-00-989-7434	96906	MS35207-263	.SCREW,MACHINE	EA	8
7	10	PAOZZ	5305-00-984-4992	96906	M535206-232	.SCREW,MACHINE	EA	4
7	11	PAOZZ	5310-00-082-1404	96906	MS27183-6	.WASHER,FLAT	EA	4
7	12	PAOZZ	5310-00-081-8087	96906	MS21044-N06	.NUT,SELF-LOCKING	EA	4
7	13	PAOZZ	5310-00-579-0079	98906	MS35333-37	WASHER,LOCK.....	EA	4
7	14	PAOZZ	5310-00-880-9344	97403	13211E8337	.WASHER,LOCK.....	EA	4
7	15	PAOZZ	5305-00-959-5237	97403	13214E3744W4	.SCREW,PANELFASTNER.....	EA	4
7	16	PAOZZ	5925-01-071-7019	74193	006-10245	.BOOT,DUSTANDMOISTURE	EA	1
7	17	PAOZZ	5310-00-902-6878	96906	MS21083N3	NUT,SELF-LOCKING	EA	2
7	18	XBOZZ		97403	13220E5385-2	ARM,ACTUATOR	EA	1
7	19	PAOZZ	5305-00-984-4983	96906	MS35208-228	.SCREW,MACHINE	EA	6
7	20	PAOZZ	5310-00-579-0079	96908	MS35333-37	.WASHER,LOCK	EA	6
7	21	PAOZZ		74193	JA3-Z79-1	.CIRCUIT BREAKER	EA	1
7	22	MOOOO		97403	13220E6712-8	.LEAD,ELECTRICAL.....	EA	1
7	23	PAOZZ	5940-00-143-4780	96906	MS25036-108	..TERMINAL,LUG	EA	1
7	24	PAOZZ	5940-00-926-0085	97403	13216E6191-2	..CLAMP,ELECTRICAL.....	EA	1
7	25	MOOOZ		81349	M5086/1-14-9	..WIRE,ELECTRICAL	FT	V
7	26	MOOOO		97403	13220E8712-9	.LEAD ELECTRICAL.....	EA	1
7	27	PAOZZ	5940-00-143-4780	96906	MS25036-108	..TERMINAL,LUG	EA	1
7	28	PAOZZ	5940-00-926-0085	97403	13216E8191-2	..CLAMP,ELECTRICAL.....	EA	1
7	29	MOOOZ		81349	M5088611-14-9	..WIRE,ELECTRICAL	FT	V
7	30	MOOCO		97403	13220E8712-10	.LEAD ELECTRICAL.....	EA	1
7	31	PAOZZ	5940-00-143-4780	96906	M525036-108	..TERMINAL,LUG	EA	1
7	32	PAOZZ	5940-00-926-0085	97403	13216E6191-2	..CLAMP,ELECTRICAL	EA	1
7	33	MOOOZ		81349	M5086/1-14-9	.WIRE,ELECTRICAL	FT	V

Change 1 21

(1) ILLUSTRATION		(2)	(3)	(4)	(5)	(6)	(7)	(8)
(a) FIG NO.	(b) ITEM NO.	SMR CODE	NATIONAL STOCK NUMBER	FSCM	PART NUMBER	DESCRIPTION USABLE ON CODE	U/M	QTY INC IN UNIT
7	34	MOODO		97403	13220E6712-18	.LEAD ELECTRICAL.....	EA	1
7	35	PAOZZ	5940-00-143-4774	96906	MS25036-153	..TERMINAL,LUG	EA	1
7	36	PAOZZ	5940-00-150-4682	97403	13216E6192	.TERMINAL,QUICKDISCONNECT	EA	1
7	37	MOOOZ		81349	M508611-16-9	..WIRE,ELECTRICAL	FT	V
7	38	PAOZZ		96906	MS9241-007	.PACKING,PREFORMED	EA	3
7	39	PAOZZ		97403	13214E3487-2	.RELAY,PHASE SEQUENCE	EA	1
7	40	MOOOO		97403	13214E3507-2	.WIRING ASSY RELAY	EA	1
7	41	PAOZZ	5940-00-143-4774	96906	MS25036-153	.TERMINALLUG	EA	4
7	42	MOOOZ		81349	M5086/11-16-9	..WIRE,ELECTRICAL	FT	V
7	43	MOODO		81349	MIL-1-2305315 CLA SS 1	..SHRINK SLEEVING.....	FT	V
7	44	PAOZZ	5310-00-081-8087	96906	MS21044-N06	.NUT,SELF-LOCKING	EA	3
7	45	PAOZZ	5310-00-082-1404	96906	MS27183-6	.WASHER,FLAT.....	EA	3
7	46	PAOZZ	5310-00-275-6813	97403	13214E3523-6	.NUT,SHEETSPRING	EA	4
7	47	PAOZZ	5310-00-877-5797	96906	MS21044N3	.NUT,SELF-LOCKING	EA	8
7	48	PAOZZ	5945-00-549-6348	96906	MS24192D1	.RELAY	EA	2
7	49	MOOOO		97403	13220E6712-2	.LEAD,ELECTRICAL	EA	1
7	50	PAOZZ	5940-00-143-4780	96906	MS25036-108	..TERMINAL LUG	EA	2
7	51	MOOOZ		81349	M5086/1-14-9	..WIRE,ELECTRICAL	FT	V
7	52	MOOOO		97403	13220E6712-4	.LEAD,ELECTRICAL	EA	1
7	53	PAOZZ	5940-00-143-4780	96906	MS25036-108	.TERMINAL LUG.....	EA	2
7	54	MOOOZ		81349	M508611-14-9	..WIRE,ELECTRICAL	FT	V
7	55	MOOOO		97403	13220E712-6	.LEAD ELECTRICAL	EA	1
7	56	PAOZZ	5940-00-143-4780	96906	MS25036-108	..TERMINAL LUG	EA	2
7	57	MOOOZ		81349	M5086/1-14-9	..WIRE,ELECTRICAL	FT	V
7	58	PAOZZ	5961-00-106-5259	58849	SS-329	.RECTIFIER,SEMICONDUCTOR	DGE	EA 1
7	58	PAOZZ		97403	13214E3652	.RECTIFIER,SEMICONDUCTOR DEVICE	EKQ	EA 1
7	59	PAOZZ	5910-00-822-5683	81349	MILC11015-12	.CAPACITOR,FIXED	EA	1
7	60	PAOZZ	5330-00-914-7651	96906	MS51007-12	.GASKET	EA	1
7	61	PAOZZ	5310-00-081-8087	96906	MS21044-N06	.NUT,SELF-LOCKING	EA	4
7	62	PAOZZ	5310-00-811-3494	98906	MS21044N08	.NUT,SELF-LOCKING	EA	4
7	63	PAOZZ	5310-00-088-0551	96906	MS21044N04	.NUT,SELF-LOCKING	EA	4
7	64	PAOZZ	5330-00-060-1679	96906	MS51007-2	.GASKET	EA	1
7	65	PAOZZ	5330-00-828-3628	96906	MS51007-10	.GASKET	EA	1
7	66	PAOZZ		41625	B48701-000- 0022.0	.CONTROL ASSY	DGE	EA 1

Change 1 22

(1) ILLUSTRATION		(2)	(3)	(4)	(5)	(6)	(7)	(8)
(a) FIG NO.	(b) ITEM NO.	SMR CODE	NATIONAL STOCK NUMBER	FSCM	PART NUMBER	DESCRIPTION USABLE ON CODE	U/M	QTY INC IN UNIT
7	66	PAOZZ		97403	13217E6815-4	.CONTROL ASSEMBLY PUSH PULL	EKO	EA 1
7	67	PAOZZ	5355-00-171-2442	41625	B43310-1	..KNOB	DGE	EA 1
7	67	PAOZZ		97403	13217E6816	..KNOB	EKQ	EA 1
7	68	PAOZZ	5310-00-584-7888	96906	MS35338-32	..WASHER,LOCK	DGE	EA 1
7	68	PAOZZ		96906	MS35335-32	..WASHER,LOCK	EKQ	EA 1
7	69	PAOZZ	5365-01-090-2070	97403	13211E8376-5	..SPACER,SLEEVE		EA 2
7	70	PAOZZ	5340-00-247-6228	96906	MS21104D3	..CLAMP,LOOP	DGE	EA 2
7	70	PAOZZ		96906	MS21919WCH3	..CLAMP,LOOP	EKQ	EA 2
7	71	PAOZZ	5305-00-984-6196	96906	MS35206-248	..SCREW,MACHINEEA	EA 2
7	72	PAOZZ	2990-00-451-4838	41625	A37693	..CONTROLASSY	DGE	EA 2
7	72	PAOZZ		97403	13217E6817	..ENDFITTINGCORE	EKQ	EA 2
7	73	XBOZZ		97403	13220E5386	..PLATE,ACTUATOR	EA	EA 1
Change 1 23								

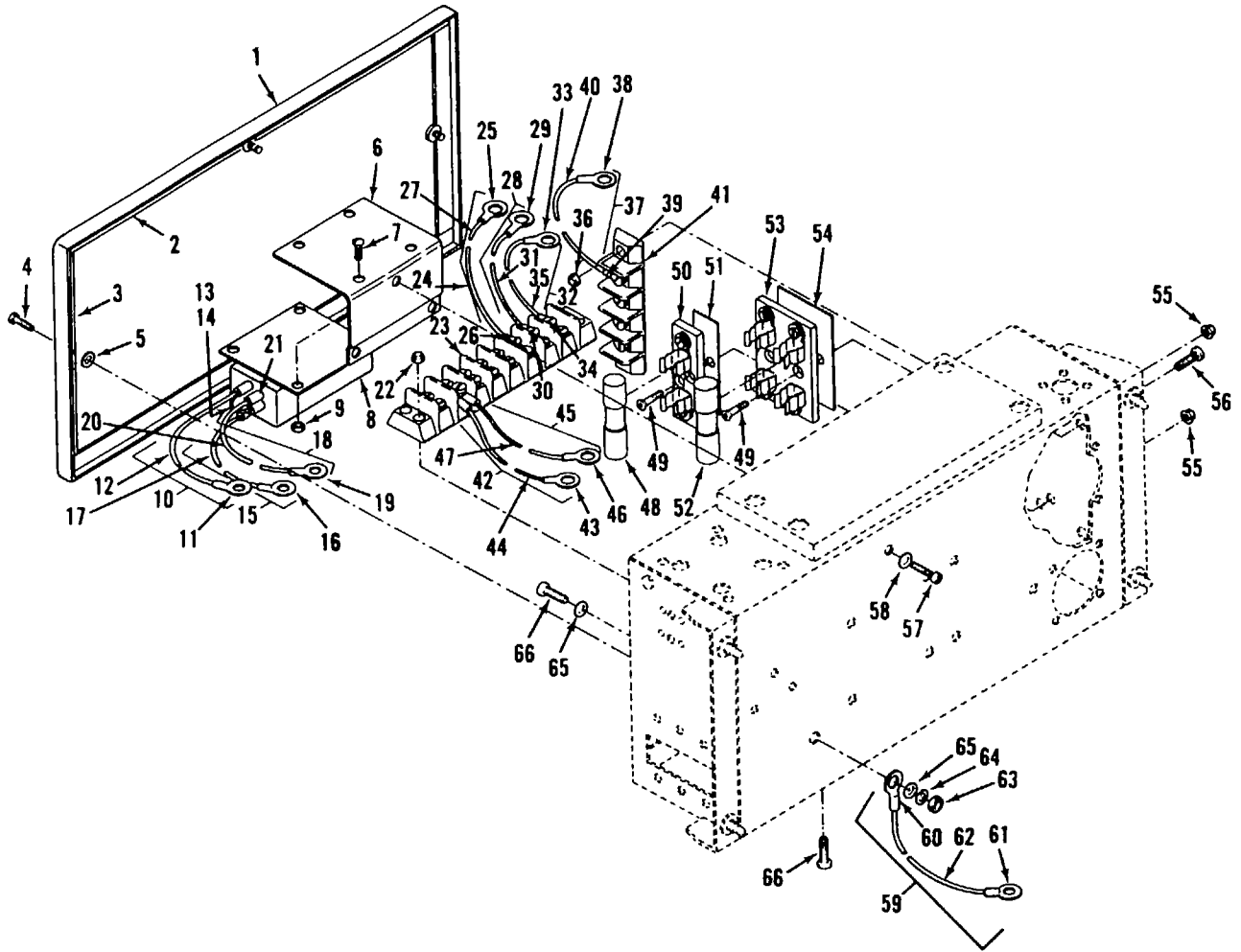


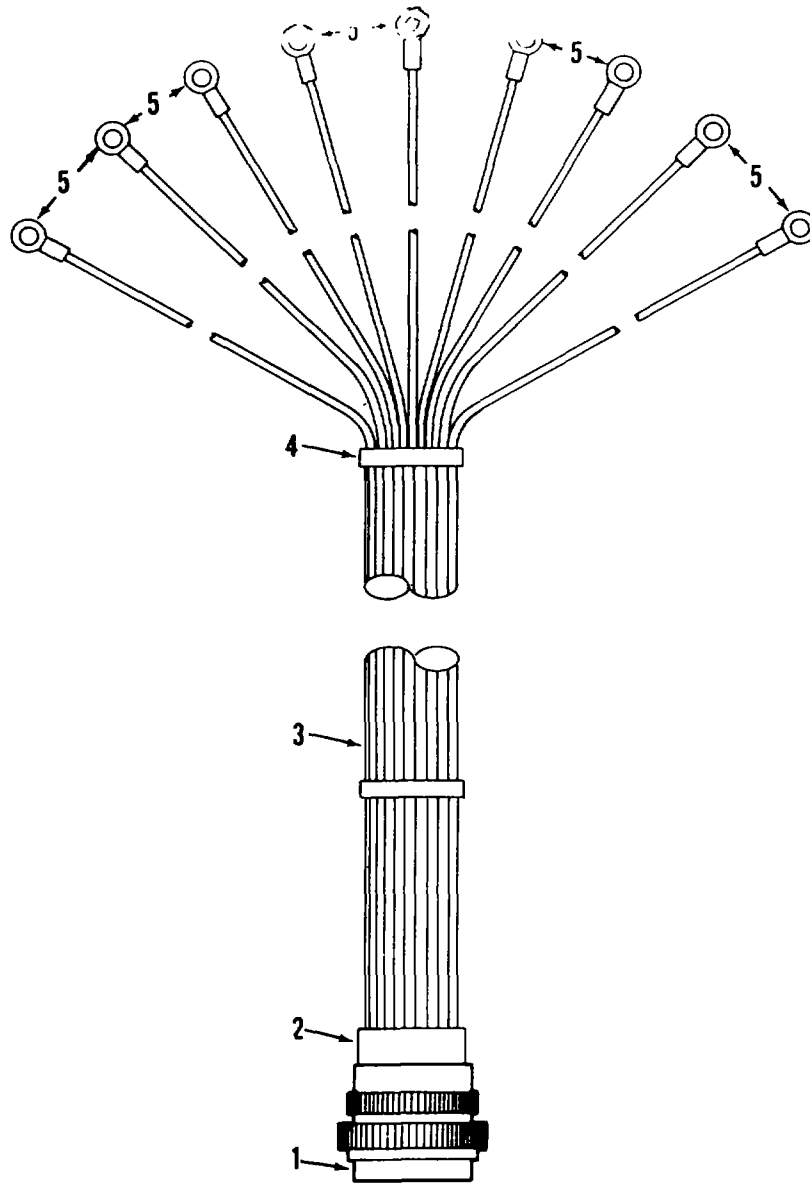
Figure 8. Junction Box, Terminal Boards, Fuse Blocks and Fuses

(1) ILLUSTRATION		(2)	(3)	(4)	(5)	(6)	(7)	(8)
(a) FIG NO.	(b) ITEM NO.	SMR CODE	NATIONAL STOCK NUMBER	FSCM	PART NUMBER	DESCRIPTION USABLE ON CODE	U/M	QTY INC IN UNIT
8	1	XBOZZ		97403	13214E3412	.COVER	EA	1
8	2	MOOOO		81348	ASTM-D-1056 SBE-42-CF2 0. 125 STK	..STRIP,SEALING	SH	V
8	3	MOOOO		81348	ASTM-D-OS1058 SEE-42-CF2 0. 125 STK	..STRIP,SEALING MFG FROM ASTM-D-1058,1/8 IN.X 5/18 IN X 8.125 IN. LG	SH	V
8	4	PAOZZ		94222	12-11-303W-8	..SCREWDGE	EA	4
8	4	PAOZZ		97403	13214E3744W8	..SCREWEKQ	EA	4
8	5	PAOZZ	5310-00-880-9344	97403	13211E8337	..WASHER,LOCK	EA	4
8	6	XBOZZ		97403	13222E8358	BRACKET	EA	1
8	7	PAOZZ	5305-00-984-4988	96908	MS35208-228	..SCREW,MACHINE	EA	4
8	8	PAOZZ	5945-00-007-7889	02280	1880-S590-3	..RELAY,SOLIDSTATE	EA	1
8	9	PAOZZ	5310-00-081-8087	98906	MS21044-N08	..NUT,SELF-LOCKING	EA	4
8	10	MOOCO		97403	13220E8702-27	..LEAD,ELECTRICAL	EA	1
8	11	PAOZZ	5940-00-283-5280	96908	MS25038-108	..TERMINAL,LUG	EA	1
8	12	MOOOZ		81349	M5088/1-18-9	..WIRE,ELECTRICAL	FT	V
8	13	MOOOO		97403	13220E6702-28	..LEAD,ELECTRICAL	EA	1
8	14	MOOOZ		81349	M5088/1-18-9	..WIRE,ELECTRICAL	FT	V
8	15	MOOOO		97403	13220E8702-29	..LEAD,ELECTRICAL	EA	1
8	16	PAOZZ	5940-00-143-4774	98908	MS25038-153	..TERMINAL,LUG	EA	1
8	17	MOOOZ		81349	M508811-18-9	..WIRE,ELECTRICAL	FT	V
8	18	MOOOO		97403	13220E8702-33	..LEAD,ELECTRICAL	EA	1
8	19	PAOZZ	5940-00-143-4774	98908	MS25038-153	..TERMINAL,LUG	EA	1
8	20	MOOOZ		81349	M5088/1-18-9	..WIRE,ELECTRICAL	FT	V
8	21	MOOOO		81349	MIL-I-23053/5 CLA SS 1	..SHRINK,SLEEVING	FT	V
8	22	PAOZZ	5310-00-877-5797	98908	MS21044N3	..NUT,SELF-LOCKING	EA	4
8	23	XBOZZ		81349	MIL-T-55184/3	..TERMINAL BOARD	EA	1
8	24	MOOOO		97403	13220E8712-5	..LEAD,ELECTRICAL	EA	1
8	25	PAOZZ	5940-00-143-4774	98906	MS25038-153	..TERMINAL,LUG	EA	1
8	26	PAOZZ	5940-00-143-4780	98908	MS25038-108	..TERMINAL,LUG	EA	1
8	27	MOOOZ		81349	M506/1-14-9	..WIRE,ELECTRICAL	FT	V
8	28	MOOOO		97403	13220E8712-3	..LEAD,ELECTRICAL	EA	1
8	29	PAOZZ	5940-00-143-4780	98906	MS25038-108	..TERMINAL,LUG	EA	1
8	30	PAOZZ	5940-00-143-4774	98908	MS25038-153	..TERMINAL,LUG	EA	1
8	31	MOOOZ		81349	M5086/1-14-9	..WIRE,ELECTRICAL	FT	V
8	32	MOOOO		97403	13220E8712-1	..LEAD,ELECTRICAL	EA	1
8	33	PAOZZ	5940-00-143-4780	98906	MS25038-108	..TERMINAL,LUG	EA	1

Change 1 25

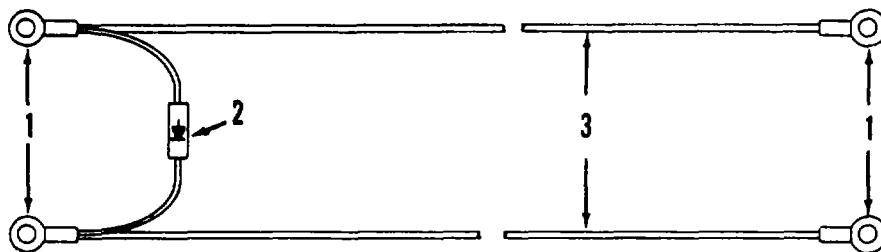
(1) ILLUSTRATION		(2)	(3)	(4)	(5)	(6)	(7)	(8)
(a) FIG NO.	(b) ITEM NO.	SMR CODE	NATIONAL STOCK NUMBER	FSCM	PART NUMBER	DESCRIPTION USABLE ON CODE	U/M	QTY INC IN UNIT
8	34	PAOZZ	5940-00-143-4774	96906	MS25036-153	TERMINAL,LUG	EA	1
8	35	MOOOZ		81349	M508611-14-9	WIRE,ELECTRICAL	FT	V
8	36	PAOZZ	5310-00-081-8087	96906	MS21044-N06	NUT,SELF-LOCKING	EA	2
8	37	MOOOO		97403	13220E6712-30	.LEAD,ELECTRICAL	EA	1
8	38	PAOZZ	5940-00-143-4774	96906	MS25036-153	TERMINAL,LUG	EA	1
8	39	PAOZZ	5940-00-283-5280	96906	MS25036-106	TERMINAL,LUG	EA	1
8	40	MOOOZ		81349	M5086/1-16-9	WIRE,ELECTRICAL	FT	V
8	41	XBOZZ		97403	13214E3804	TERMINAL BOARD	EA	1
8	42	MOOOO		97403	13220E6712-32	.LEAD ELECTRICAL.....	EA	1
8	43	PAOZZ	5940-00-143-4774	96906	MS25036-153	TERMINAL,LUG	EA	2
8	44	MOOOZ		81349	M5086/1-16-9	WIRE,ELECTRICAL	FT	V
8	45	MOOO	Z	97403	13206E6712-34	LEAD,ELECTRICAL	EA	1
8	46	PAOZZ	5940-00-143-4774	96906	MS25036-153	TERMINAL,LUG	EA	2
8	47	MOOOZ		81349	M5086/1-16-9	WIRE,ELECTRICAL	FT	V
8	48	PAOZZ	5920-00-939-5442	71400	KAW5	FUSE,CARTRIDGE	EA	1
8	49	PAOZZ	5305-00-059-4552	96906	MS35190-237	.SCREW,MACHINE	EA	4
8	50	PAOZZ	5920-00-240-4066	71400	4515	.FUSE BLOCK	EA	1
8	51	MOOOO		81346	ASTM-D-710 ELE	C-INSULATION MFG FROM ASTM-D-710,0 031 STK X 0.750		
					GRADE COLOR	X 2.560 LG	SH	V
					GREY			
8	52	PAOZZ	5920-00-280-4431	81349	MIL-F-15160/9	FUSE	EA	1
8	53	XBOZZ		97403	13211E3784	FUSE BLOCK	EA	1
8	54	MOOOO		81346	ASTM-D-710 ELE	C-INSULATION MFG FROM ASTM-D-710, 0.031 STK X 1.310		
					GRADE COLOR	X 2 560 LG	SH	V
					GREY			
8	55	PAOZZ	5310-00-081-8087	96906	MS21044-N06	.NUT,SELF-LOCKING	EA	4
8	56	PAOZZ	5305-00-889-3001	96906	MS35206-231	.SCREW,MACHINE	EA	2
8	57	PAOZZ	5305-00-984-4988	96906	MS35206-228	.SCREW,MACHINE	DGE	EA 1
8	57	PAOZZ	96906	MS35206-230	MS35206-230	.SCREW,MACHINE	EKQ	EA 1
8	58	PAOZZ	5310-00-082-1404	96906	MS27183-6	WASHER,FLAT	EA	1
8	59	MOOOO	97403	13220E6712-7	13220E6712-7	LEAD ELECTRICAL	EA	1
8	60	PAOZZ	5940-00-143-4794	96906	MS25036-112	TERMINAL,LUG	EA	1
8	61	PAOZZ	5940-00-143-4777	96906	MS25036-157	TERMINAL,LUG.....	.EA	1
8	62	MOOOZ	81349	M5086/1-10-9	M5086/1-10-9	WIRE,ELECTRICAL	FT	V
8	63	PAOZZ	5310-00-877-5797	96906	MS21044N3	.NUT,SELF-LOCKING	EA	1
8	64	PAOZZ	5310-00-045-3296	96906	MS35338-43	WASHER,LOCK	EA	1
8	65	PAOZZ	5310-00-014-5850	96906	MS27183-42	.WASHER,FLAT	EA	2
8	66	PAOZZ	5305-00-984-6213	96906	MS35206-266	.SCREW,MACHINE	EA	5

Change 1 26



TM5-4120-339-24P/9

Figure 9. Wiring Harness, 13220E6707



TM5-4120-339-24P/10

Figure 10. Wiring Harness 13220E6708

(1) ILLUSTRATION		(2)	(3)	(4)	(5)	(6)	(7)	(8)
(a) FIG NO.	(b) ITEM NO.	SMR CODE	NATIONAL STOCK NUMBER	FSCM	PART NUMBER	DESCRIPTION USABLE ON CODE	U/M	QTY INC IN UNIT
9		MOOOO		97403	13220E6707	.WIRING HARNESS	EA	1
9	1	PAOZZ	5935-00-846-2329	96906	MS3106R20—275	..CONNECTOR ELECTRICAL	EA	1
9	2	XBOOZ	5340-00-023-5322	96906	MS25251-16	..PLUG, PROTECTIVE	EA	1
9	3	MOOOZ		81349	M5086/1-16-9	..WIRE ELECTRICAL	FT	V
9	4	MOOOO			MIL-I-43435 TYPE	..TAPE, LACING.....	FT	V
9	5	PAOZZ	5940-00-143-4774	96906	MS25036-153	..TERMINAL, LUG.....	EA	9
10		MOOOO		97403	13220E6708	.WIRING HARNESS	EA	1
10	1	PAOZZ	5940-00-143-4774	96906	MS25306-153	..TERMINAL, LUG.....	EA	1
10	2	PAOZZ	5961-00-054-4150	09124	1N1695	..SEMICONDUCTOR DEVICE	EA	1
10	3	MOOOZ		81349	M5086/1-16-9	..WIRE ELECTRICAL	FT	V
					29			

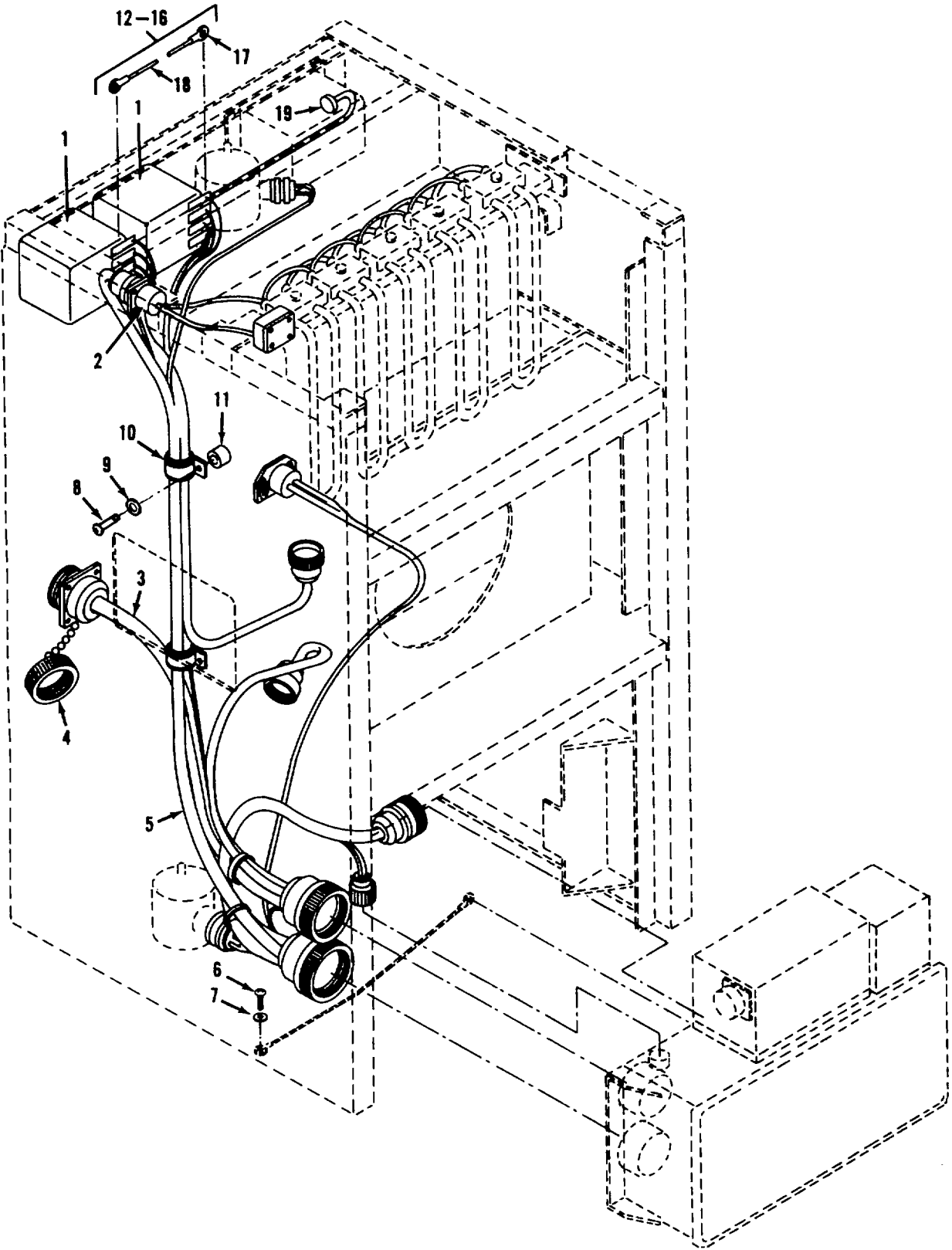


Figure 11. Electrical Installation

(1) ILLUSTRATION		(2)	(3)	(4)	(5)	(6)	(7)	(8)
(a) FIG NO.	(b) ITEM NO.	SMR CODE	NATIONAL STOCK NUMBER	FSCM	PART NUMBER	DESCRIPTION USABLE ON CODE	U/M	QTY INC IN UNIT
11	1	PAOZZ	5945-00-430-6933	77342	PM4030	RELAY,ELECTROMAGNET	EA	2
11	2	MOOOO	6150-00-107-3741	97403	13214E3587	LEAD ASSY,ELECTRICAL REFER TO FIG12 FOR PARTS BREAKDOWN	EA	1
11	3	MOOOO		97403	13218E9902	WIRING HARNESS REFER TO FIG 13 FOR PARTS BREAKDOWN	EA	1
11	4	PAOZZ	5935-00-221-8620	96906	MS25043-200	COVER,ELECTRICAL	EA	1
11	5	AOOOO		97403	13220E6709	WIRING HARNESS REFER TO FIG 14 FOR PARTS BREAKDOWN.....DGE	EA	1
11	5	AOOOO		97403	13222E7230	WIRING HARNESS REFER TO FIG 14 FOR PARTS BREAKDOWN	EKQ	EA 1
11	6	PAOZZ	5305-00-068-0505	96906	MS90726-5	SCREW,CAP,HEXAGON	EA	1
11	7	PAOZZ	5310-00-809-4058	96906	MS27183-10	WASHER,FLAT	EA	1
11	8	PAOZZ	5305-00-993-1848	96906	MS35207-265	SCREW,MACHINE	DGE	EA 2
11	8	PAOZZ		96906	MS35207-268	SCREW,MACHINE	EKQ	EA 2
11	9	PAOZZ	5310-00-045-3296	96906	MS35338-43	WASHER,LOCK.....	EA	2
11	10	PAOZZ	5340-00-726-9317	96908	MS21919DG9	CLAMP,LOOP	DGE	EA 2
11	10	PAOZZ		96906	MS21919WCH9	CLAMP,LOOP	EKQ	EA 2
11	11	XBOZZ		97403	13211E8376-1	SPACER	EA	2
11	12	MOOOO		97403	13220E6712-21	LEAD ELECTRICAL K7- C3 TO KS-A3	EA	1
11	13	MOOOO		97403	13220E6712-19	LEADELECTRICALK7-CITOK8-CI	EA	1
11	14	MOOOO		97403	13220E6712-20	LEAD ELECTRICAL K7-D1 TO K8-D1	EA	1
11	15	MOOOO		97403	13220E6712-22	LEAD ELECTRICAL K7-D3 TO K8-B3	EA	1
11	16	MOOOO		97403	13220E6712-36	LEAD ELECTRICAL K7-A3 TO K7-B1	EA	1
11	17	PAOZZ	5940-00-143-4774	96906	MS25036-153	.TERMINAL,LUG.....	EA	8
11	18	MOOOZ		81349	M5086/1-16-9	.WIRE,ELECTRICAL	FT	V
11	19	PAFZZ	5325-00-263-6632	96906	MS35489-6	GROMMET.NONMETALIC	EA	1

Change 1 31

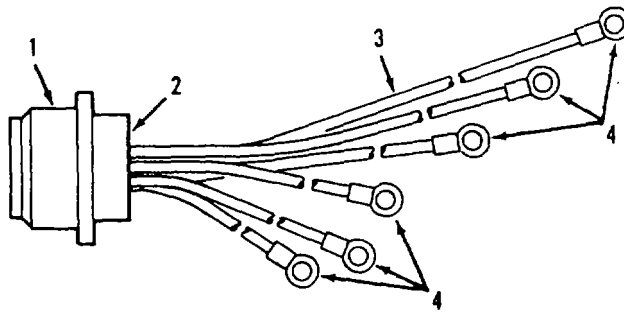


Figure 12. Wiring Harness, 13214E3587

(1) ILLUSTRATION		(2)	(3)	(4)	(5)	(6)	(7)	(8)
(a) FIG NO.	(b) ITEM NO.	SMR CODE	NATIONAL STOCK NUMBER	FSCM	PART NUMBER	DESCRIPTION USABLE ON CODE	U/M	QTY INC IN UNIT
12		MOOOZ		97403	13214E3587	LEAD ASSEMBLY, ELECTRICAL	EA	1
12	1	PAOZZ	5935-00-835-4208	96906	MS3100R16 S1PW	.CONNECTOR , ELECTRICAL.....	EA	1
12	2	XBOZZ	5340-00-823-5322	91906	M25251-16	.LUG, PROTECTIVE.....	EA	1
12	3	MOOOZ		81349	M5086/1-16-9	.WIRE, ELECTRICAL	FT	V
12	4	PAOZZ	5940-00-143-4780	96906	MS25036-108	.TERMINAL, LUG.....	EA	6
33								

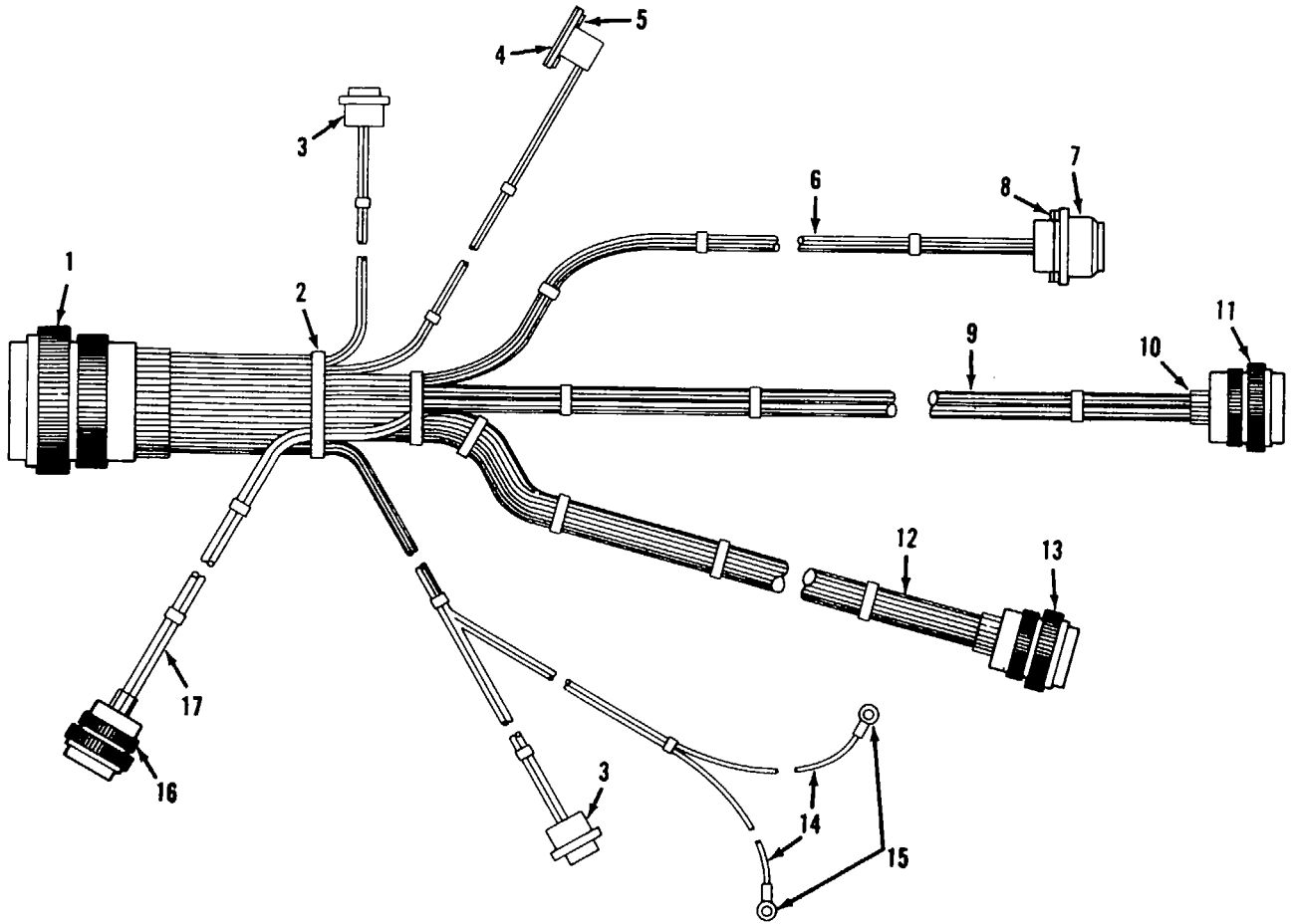


Figure 13. Wiring Harness, 13218E9902

(1) ILLUSTRATION		(2)	(3)	(4)	(5)	(6)	(7)	(8)
(a) FIG NO.	(b) ITEM NO.	SMR CODE	NATIONAL STOCK NUMBER	FSCM	PART NUMBER	DESCRIPTION USABLE ON CODE	U/M	QTY INC IN UNIT
13		MOOOO		97403	13218E9902	WIRING HARNESS	EA	1
13	1	PAOZZ	5935-00-847-8124	96908	MS3106R32-6S	.CONNECTOR,ELECTRICAL	EA	1
13	2	MOOO		81349	MIL-T-43435TYPE 1 FINISH B SIZE 3	.TAPE LACING.....	FT	V
13	3	PAOZZ	5975-00-937-3880	49367	DB92100	.CONNECTORBOX,ELECTRICALDGE	EA	2
13	3	PAOZZ		97403	13214E3467	.CONNECTOR BOX,ELECTRICAL..... EKQ	EA	2
13	4	PAOZZ	5930-00-981-8880	97403	13211E8180	.SWITCH,THERMOSTATIC.....	EA	1
13	5	XBOZZ		97403	13220E5672	.PLATE,CONNECTOR	EA	1
13	6	MOOOZ		81349	M5088/1-12-9	WIRE,ELECTRICAL	FT	V
13	7	PAOZZ	5935-00-928-7885	98906	MS3100R20-4P	.CONNECTOR,ELECTRICAL	EA	1
13	8	PAOZZ		97403	13211E8320-7	.RETAINER RING,ELECTRICAL CONNECTOR	EA	1
13	9	MOOOZ		81349	M5088/1-16-9	.WIRE,ELECTRICAL	FT	V
13	10	XBOZZ	5340-00-823-5322	96906	MS25251-16	.PLUG,PROTECTVE	EA	2
13	11	PAOZZ	5935-01-068-7478	96906	MS3106R18S1SW	.CONNECTOR,ELECTRICAL	EA	1
13	12	MOOOZ		81349	M5088/1-14-9	.WIRE,ELECTRICAL	FT	V
13	13	PAOZZ	5935-00-818-8848	98906	MS3106R20-15S	.CONNECTOR,ELECTRICAL	EA	1
13	14	MOOOZ		81349	M508681-18-9	.WIRE,ELECTRICAL	FT	V
13	15	PAOZZ	5940-00-143-4774	96906	MS25038-153	.TERMINAL,LUG	EA	2
13	16	PAOZZ	5935-00-816-4802	98908	MS3106R10SL3P	.CONNECTOR,ELECTRICAL	EA	1
13	17	MOOOZ		81349	M508811-18-9	WIRE,ELECTRICAL	FT	V
Change 1 35								

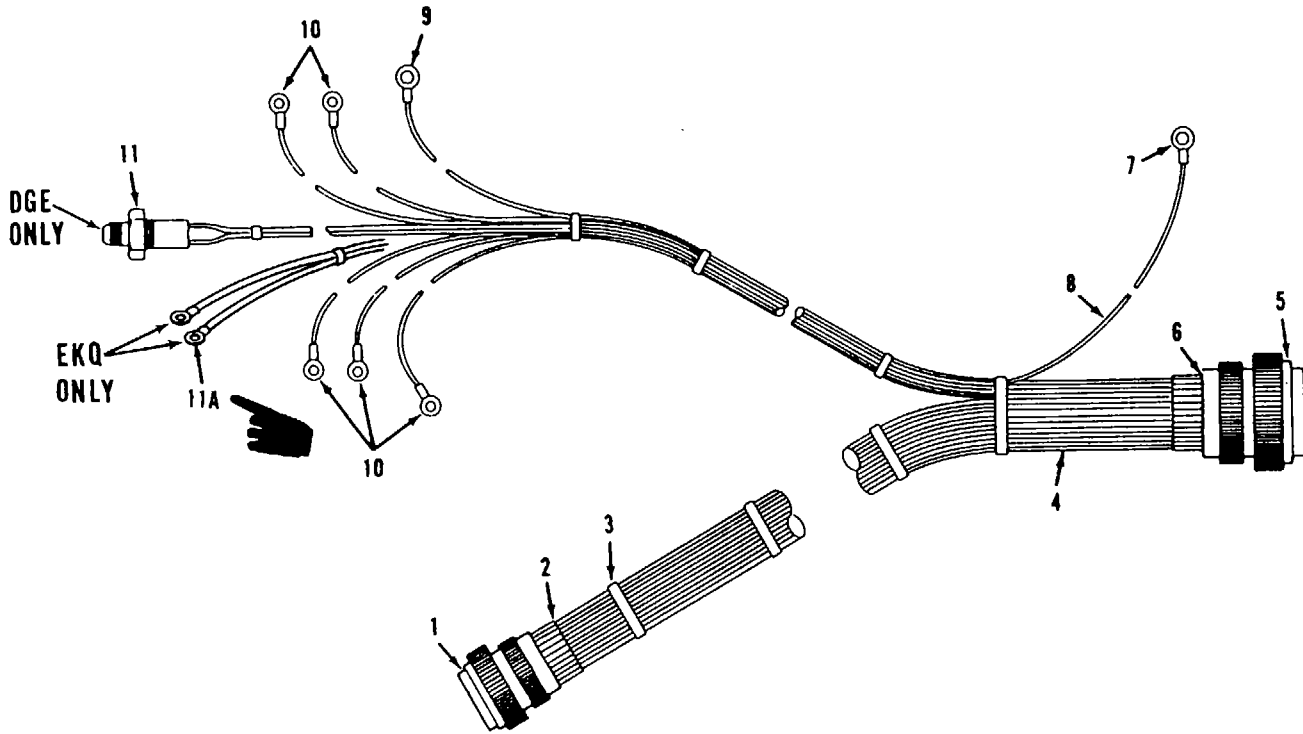


Figure 14. Wiring Harness, 1320E6709 and 1322E7230

(1) ILLUSTRATION		(2)	(3)	(4)	(5)	(6)	(7)	(8)
(a) FIG NO.	(b) ITEM NO.	SMR CODE	NATIONAL STOCK NUMBER	FSCM	PART NUMBER	DESCRIPTION USABLE ON CODE	U/M	QTY INC IN UNIT
14		MOOOO		97403	13220E6709	.WIRING HARNESS DGE	EA	1
14		AOOOO		97403	13222E7230	.WIRING HARNESS EKQ	EA	1
14	1	PAOZZ	5935-00-801-6623	96906	MS3100R28-11S	.CONNECTOR,ELECTRICAL ..	EA	1
14	2	XBOZZ	5935-00-565-9503	96906	MS25251-12	.PLUG.ENDSEAL.ELECTRICAL ..	EA	4
14	3	MOOOO		81349	MIL-T-43435 TYPE 1 FINISH B SIZE 3	TAPE,LACING	FT	V
14	4	MOOOZ		81349	M5086/1-16-9	.WIRE,ELECTRICAL	FT	V
14	5	PAOZZ	5935-00-752-2793	96906	MS3108R28-12P	.CONNECTOR,ELECTRICAL	EA	1
14	6	XBOZZ	5340-00-823-5322	96906	MS25251-16	.PLUG,PROTECTIVE	EA	1
14	7	PAOZZ	5940-00-143-4777	96906	MS25036A157	.TERMINAL,LUG	EA	1
14	8	MOOOZ		81349	M5088/1-10-9	.WIRE,ELECTRICAL	FT	V
14	9	PAOZZ	5940-00-143-4794	96906	MS25036-112	TERMINAL,LUG	EA	1
14	10	PAOZZ	5940-00-143-4774	96906	MS25036-153	.TERMINAL,LUG	EA	5
14	11	PAOZZ	5930-00-396-2244	82647	6PS306N405NL 285	.SWITCH,PRESSURE DGE	EA	1
14	11A	PAOZZ		96906	MS25036-107	.TERMINAL,LUG EKQ	EA	2

Change 1 37

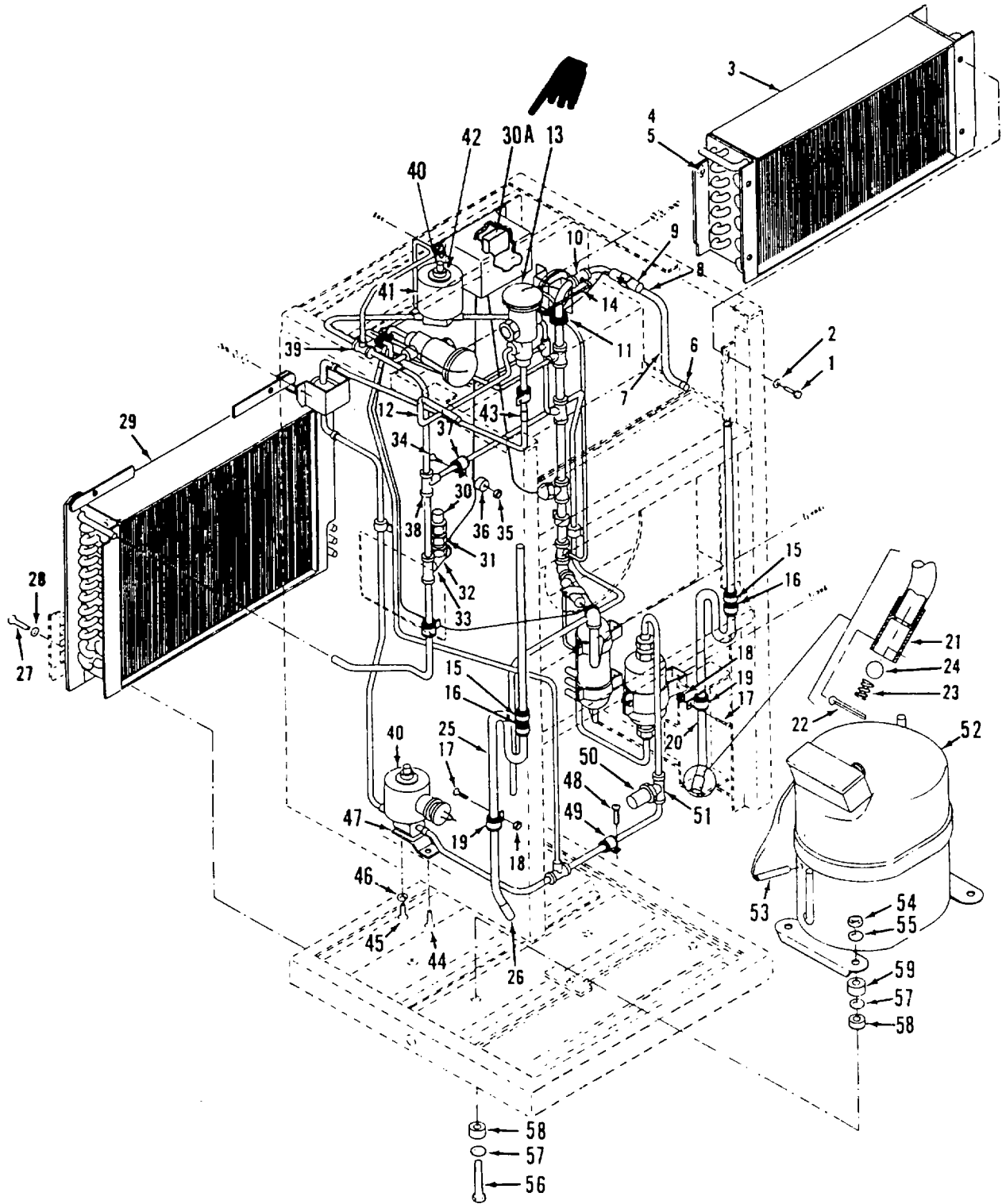
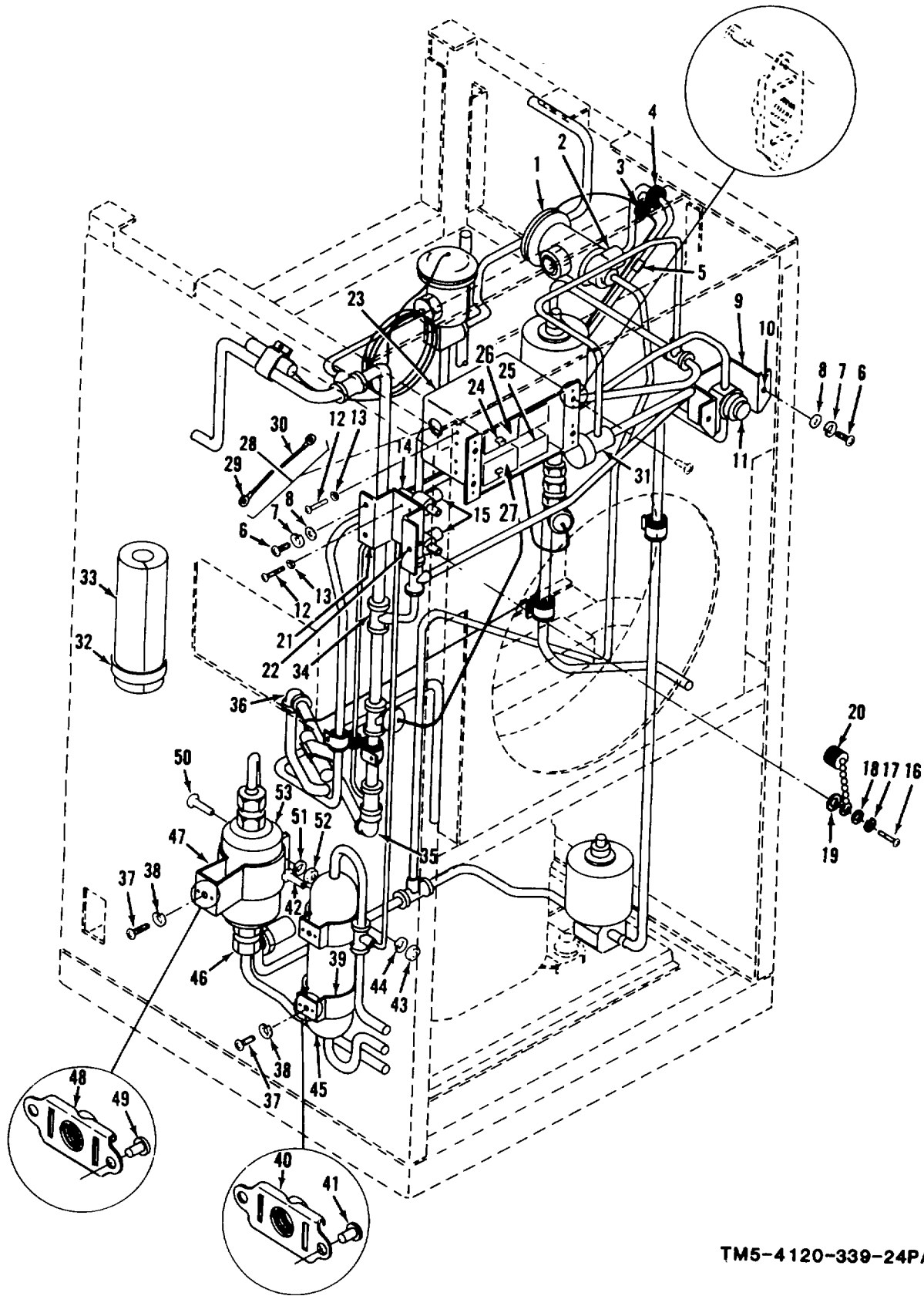


Figure 15. Refrigerant Compressor, Coil, and Tubing

(1) ILLUSTRATION		(2)	(3)	(4)	(5)	(6)	(7)	(8)
(a) FIG NO.	(b) ITEM NO.	SMR CODE	NATIONAL STOCK NUMBER	FSCM	PART NUMBER	DESCRIPTION USABLE ON CODE	U/M	QTY INC IN UNIT
						GROUP 05 REFRIGERANT SYSTEM		
15	1	PAFZZ	5305-00-857-5867	96906	MS9122-03	SCREW,MACHINE	EA	6
15	2	PAFZZ	5310-00-809-8546	96906	MS27183-8	WASHER,FLAT	EA	6
15	3	PAFZZ	4130-01-057-2638	97403	13220E0607	COIL,EVAPORATOR	EA	1
15	4	PAFZZ	5320-00-117-6938	96906	MS20426AD3-4	RIVET,SOLIDCSK	EA	12
15	5	PAFZZ	5310-00-772-3720	96906	MS21075L3	NUT,SELF-LOCKING	EA	6
15	6	PAFZZ	4730-00-932-0970	96906	MS35920-3	REDUCER,TULBE	EA	1
15	7	MFFFF		81346	ASTM-B280 0. 500 OD	TUBE,COPPER, 0.500 STK	FT	V
15	8	PAFZZ	5640-00-580-8276	77464	165	TAPE,INSULATION	EA	V
15	9	MFFFF		81346	ASTM-B280 0. 750 OD	TUBE,COPPERO 0.750 STK	FT	V
15	10	PAFZZ	4730-00-821-9184	97403	13211E4043-12	TEE,TUBE	EA	4
15	11	PAOZZ	5325-00-276-6100	96906	MS35489-14	GROMMET,NONMETALLIC	EA	1
15	12	MFFFF		81346	ASTM-B280 0. 375OD	TUBE,COPPERO.375STK	FT	V
15	13	PAFZZ	4820-00-112-0047	97403	13214E3568-2	VALVE,EXPANSION	EA	1
15	14	MFFFF		81346	ASTM-B2800. 250OD	TUBE,COPPERO.250STK	FT	V
15	15	PAFZZ	4730-00-908-3194	96906	MS35842-11	CLAMP,HOSE	EA	4
15	16	PAFZZ	4720-00-269-7060	97403	13211E8323	HOSE,DRAIN	EA	2
15	17	PAFZZ	5305-00-063-3503	96906	MS24693-S50	SCREW,MACHINE	EA	2
15	18	PAFZZ	5310-00-060-2039	96906	MS21044D08	NUT,SELF-LOCKING	EA	2
15	19	PAFZZ	5340-00-108-0551	96906	MS21004-D10	CLAMP,LOOP	DGE	EA 2
15	19	PAFZZ		96906	MS21919WCH 10	CLAMP,LOOP	EKO	EA 2
15	20	XBOZZ	4710-01-091-3906	97403	13214E3484	TUBE,BENT,METALLIC	EA	1
15	21	XBOZZ		97403	13211E8410	SEAT,BALLCHECK	EA	1
15	22	PAFZZ	5315-00-234-1856	96906	MS24665-155	PIN	EA	2
15	23	PAFZZ	5360-00-240-6526	97403	13211E8412	SPRING,HELICAL,COMPRESSION	EA	2
15	24	PAFZZ	3110-00-136-2696	97403	13211E8411	BALL,BEARING	EA	2
15	25	XBOZZ		97403	13214E3486	TUBE,DRAIN	EA	1
15	26	XBOZZ		97403	13211E8410	SEAT,BALLCHECK	EA	1
15	27	PAFZZ	5305-00-993-1848	96906	M535207-265	SCREW,MACHINE	EA	6
15	28	PAFZZ	5310-00-821-2366	97403	13214E3469	WASHER,FLAT	EA	6
15	29	PAFZZ	4130-00-902-1482	10855	76G2-224	COOLINGCOIL,AIR	EA	1
15	30	PAFZZ	5930-00-396-2244	82647	6P5306N405N 285L	SWITCH,PRESSURE	DGE	EA R
15	30A	PAFZZ		97403	13221E9273-2	SWITCH,PRESSURE	EKQ	EA 1
15	31	PAFZZ	4730-00-769-3961	41947	A13563	COUPLING,TUBE	EA	1
15	32	PAFZZ	4730-00-821-9184	41947	W40350	TEETUBEANGLE	EA	1

(1) ILLUSTRATION		(2)	(3)	(4)	(5)	(6)	(7)	(8)
(a) FIG NO.	(b) ITEM NO.	SMR CODE	NATIONAL STOCK NUMBER	FSCM	PART NUMBER	DESCRIPTION USABLE ON CODE	U/M	QTY INC IN UNIT
15	33	PAFZZ	4730-00-926-9649	97403	13214E3411-1	TEE, PIPE TO TUBE	EA	1
15	34	PAFZZ	5305-00-995-3442	96906	MS35207-268	SCREW, MACHINE	EA	6
15	35	PAFZZ	5310-00-877-5797	96906	MS21044N3	NUT, SELF-LOCKING	EA	3
15	36	XBOZZ		97403	13211E8376-1	SPACER	EA	7
15	37	PAFZZ	5340-00-543-4394	96906	MS21919DG6	CLAMP, LOOP	DGE	EA 8
15	37	PAFZZ		96906	MS21919WCH6	CLAMP, LOOP	EKO	EA 8
15	38	PAFZZ	4730-00-263-6460	96906	MS35929-3	TEE, TUBE	EA	2
15	39	PAFZZ	4730-00-818-7778	97403	13211E4043-6	TEE, TUBE	EA	3
15	40	PAFFF	4810-00-433-0763	93781	ORS320-24VDC	VALVE, SOLENOID	DGE	EA 2
15	40	PAFFF		97403	13214E3524	VALVE, SOLENOID	EKQ	EA 1
15	41	XAOZZ		93781	OR-23-24VDC	COIL AND HOUSING	DGE	EA 1
15	41	XAOZZ		93781	OR-23MM24V	COIL, SOLENOID VALVE	EKQ	EA 1
15	42	PAFZZ	5330-00-402-4645	93781	P45-111 SEAL	DGE	EA	1
15	43	PAFZZ	4730-00-264-9153	96906	MS35927-3	COUPLING, TUBE	EA	1
15	44	PAFZZ	5305-00-984-6194	96906	MS35206-246	SCREW, MACHINE	EA	1
15	45	PAFZZ	5305-00-984-6193	96906	MS35206-245	SCREW, MACHINE	EA	8
15	46	PAFZZ	5310-00-045-3299	96906	MS35338-42	WASHER, LOCK	EA	1
15	47	XBOZZ	5340-01-026-3363	97403	13214E3592-1	BRACKET, DOUBLE ANGLE	EA	1
15	48	PAFZZ	5305-00-989-7435	96906	MS35207-264	SCREW, MACHINE	EA	6
15	49	PAFZZ	5340-00-543-4394	96906	MS21919DG6	CLAMP, LOOP	DGE	EA 8
15	49	PAFZZ		96906	MS21919WCH6	CLAMP, LOOP	EKO	EA 8
15	50	PAFZZ	4820-00-073-8405	98930	C1503-01	VALVE, SAFETY RELIEF	DGE	EA 1
15	50	PAFZZ		97403	13211 E8369	VALVE, PRESSURE RELIEF	EKQ	EA 1
15	51	PAFZZ	4730-00-143-8933	97403	13214E3411-3	TEE, PIPE TO TUBE	EA	1
15	52	PAFZZ	4130-01-048-2139	97403	13208E4182-7	COMPRESSOR, REFRIGERATION	EA	1
15	53	PAFZZ	4540-00-174-0039	65586	C205	HEATINGELEMENT	EA	1
15	54	PAFZZ	5310-00-984-3806	96906	MS51922-9	NUT, SELF-LOCKING	EA	4
15	55	PAFZZ	5310-00-167-0767	88044	AN970-5	WASHER, FLAT	EA	8
15	56	PAFZZ	5306-00-235-4727	97403	13211E8166	BOLT, EXTERNALLY RELIEVED	EA	4
15	57	PAFZZ	5310-01-032-4875	97403	13214E3476	WASHER, FLAT	EA	8
15	58	PAFZZ	5310-00-401-3365	97403	13211E8170	WASHER	EA	8
15	59	XBFZZ	5365-01-114-0777	97403	13214E3659	SPACER	EA	4



TM5-4120-339-24P/16

Figure 16. Refrigerant Dehydrator and Valves

(1) ILLUSTRATION		(2)	(3)	(4)	(5)	(6)	(7)	(8)
(a) FIG NO.	(b) ITEM NO.	SMR CODE	NATIONAL STOCK NUMBER	FSCM	PART NUMBER	DESCRIPTION USABLE ON CODE	U/M	QTY INC IN UNIT
16	1	PAFZZ	4820-01-038-8231	97403	13214E3785-2	VALVE,EXPANSION.....	EA	1
16	2	PAFZZ	4730-00-822-1274	97403	13211E3799-1	REDUCER,TUBE.....	EA	1
16	3	PAFZZ	5325-00-286-6047	96906	MS35489-1	GROMMET,NONMETALLIC.....	EA	1
16	4	PACZZ	5325-00-263-6632	96906	MS35489-6	GROMMET,NONMETALLIC.....	EA	1
16	5	PAFZZ	4730-00-264-9151	96906	MS35927-2	COUPLING,TUBE.....	EA	1
16	6	PAFZZ	5305-00-984-6194	96906	MS35206-246	SCREW,MACHINE.....	EA	5
16	7	PAFZZ	5310-00-045-3299	96906	MS35338-42	WASHER,LOCK.....	EA	7
16	8	PAFZZ	5310-00-809-8544	96906	MS27183-7	WASHER,FLAT.....	EA	5
16	9	XBFFF		97403	13214E3419	BRACKET.....	EA	1
16	10	PAFZZ	5310-01-043-5788	96906	MS27130-S13K	NUT,PLAIN,BLIND,RIVET.....	EA	2
16	11	PAFZZ	4130-00-073-8404	78462	SA-K13	INDICATOR,SIGHT.....	EA	1
16	12	PAOZZ	5305-00-984-4984	96906	MS35206-227	SCREW,MACHINE.....	EA	4
16	13	PAOZZ	5310-00-045-4007	96906	MS35338-41	WASHER,LOCK.....	EA	4
16	14	PAFZZ	4730-00-189-2737	96906	MS35872-2	NUT,TUBECOUPLING.....	EA	3
16	15	PAFZZ	4820-01-015-6690	97403	13219E9499-1	VALVE,GLOBE.....	EA	2
16	16	PAFZZ	5305-00-984-8195	96906	MS35206-247	SCREW,MACHINE.....	EA	1
16	17	PAFZZ	5310-00-045-3299	96906	MS35338-42	WASHER,LOCK.....	EA	1
16	18	PAOZZ	5310-00-823-8804	96906	MS27183-9	WASHER,FLAT.....	EA	1
16	19	PAFZZ	5310-00-809-8544	96906	MS27183-7	WASHER,FLAT.....	EA	1
16	20	PAFZZ	4730-01-092-3835	97403	13219E9540	CAP AND CHAIN.....	EA	2
16	21	XBOOO		97403	13220E6722	BRACKET,SERVICE VALVE.....	EA	1
16	22	POZZ		96906	MS27130-S93	NUT,BLIND RIVET.....	EA	4
16	23	XDFFF		97403	13214E3578-1	ENCLOSURE.....	DGE EKC	EA EA
16	23	XDFFF		97403	13222E3701-1	ENCLOSURE.....	EKC	EA
16	24	PAFZZ	5320-00-117-6538	96906	MS20426AD3-4	RIVET,SOLID.....	EA	8
16	25	PAFZZ	5310-00-680-4985	80205	NAS1031A06	NUT,SELF-LOCKING.....	EA	4
16	26	PAFZZ	5930-00-275-7800	97403	13211E8404	SWITCH,PRESSURE.....	EA	1
16	27	PAFZZ	5930-00-312-4115	97403	13214E3794	SWITCH,PRESSURE.....	EA	1
16	28	MOOOO		97403	13220E6712-26	LEAD ELECTRICAL S5-1 TO S6-2.....	EA	1
16	29	PAOZZ	5940-00-143-4774	96906	MS25036-153	TERMINAL,LUG.....	EA	2
16	30	MOOOZ		81349	M5086/1-16-9	WIRE,ELECTRICAL.....	FT	V
16	31	PAFZZ	4820-00-106-1973	97403	13214E3742	REGULATOR,FLUIDPRESSURE.....	EA	1
16	32	PAFZZ	7510-00-852-8179	81349	MIL-T-22085	TAPE,PRESSURE,SENSITIVE.....	RL	V
16	33	MOOOO		191349	MIL-P-15280 FORM T O 50 ID X 0.50 WALL	PLASTIC MATERIAL.....	EA	V

(1) ILLUSTRATION		(2)	(3)	(4)	(5)	(6)	(7)	(8)
(a) FIG NO.	(b) ITEM NO.	SMR CODE	NATIONAL STOCK NUMBER	FSCM	PART NUMBER	DESCRIPTION USABLE ON CODE	U/M	QTY INC IN UNIT
16	34	PAFZZ	4730-00-203-4922	97403	13211E4043-11	TEE,TUBE	EA	1
16	35	PAFZZ	4730-00-821-3037	97403	13216E6176-3	ELBOW,TUBE	EA	1
16	36	PAFZZ	4730-00-254-6449	97403	13216E6190-3	ELBOW,TUBE	EA	1
16	37	PAFZZ	5305-00-993-2738	98906	MS35207-280	SCREW,MACHINE	EA	3
16	38	PAFZZ	5310-00-582-5965	96906	MS35338-44	WASHER,LOCK	EA	3
16	39	PAFZZ		97403	13211E8408-1	CLAMP,LOOP	EA	2
16	40	PAFZZ	5310-00-771-7359	96906	MS21076-L4	NUT,SELF LOCK PLATE	EA	1
16	41	PAFZZ	5320-00-005-6256	11815	CCR264SS3-4	RIVET,BLIND	EA	2
16	42	PAFZZ	5305-00-958-0588	96906	MS35207-287	SCREW,MACHINE	EA	2
16	43	PAFZZ	5310-00-043-0520	96906	MS35650-3252	NUT,PLAIN,HEXAGON	EA	2
16	44	PAFZZ	5310-00-582-5965	96906	MS35338-44	WASHER,LOCK	EA	2
16	45	XBFZZ		97403	13214E3798-2	RECEIVER	EA	1
16	46	PAFZZ	4730-00-189-2739	96906	MS35872-3	NUT,TUBE COUPLING	EA	2
16	47	PAFFF		97403	13211E8406-2	BRACKET ASSEMBLY	EA	1
16	48	PAFZZ	5310-00-771-7359	96906	MS2107-L4	NUT,SELF LOCK PLATE	EA	1
16	49	PAFZZ	5320-00-005-6256	11815	CCR264SS3-4	RIVET,BLIND	EA	2
16	50	PAFZZ	5305-00-088-8923	96906	MS35207-285	SCREW,MACHINE	EA	1
16	51	PAFZZ	5310-00-582-5965	96906	MS35338-44	WASHER,LOCK	EA	1
16	52	PAFZZ	5310-00-043-0520	96906	MS35650-3252	NUT,PLAIN,HEXAGON	EA	1
16	53	PAFZZ	4130-00-572-4709	70255	EK-083	DEHYDRATOR,DESICCANT	DGE	EA 1
16	53	PAFZZ		97403	13214E3557	DEHYDRATOR,DESICCANT,REFRIGERANT	EKO	EA 1

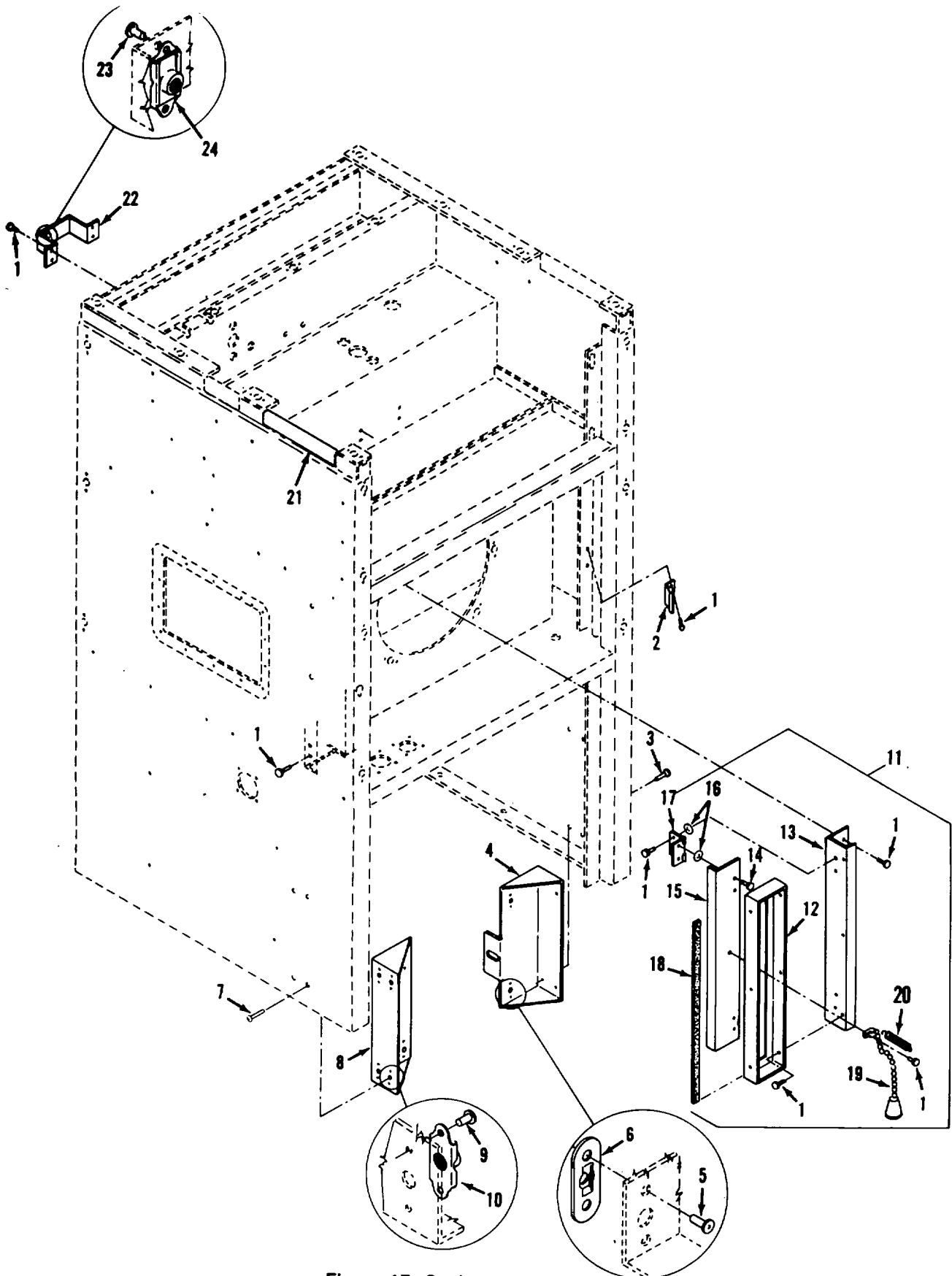


Figure 17. Casing Assembly

TM5-4120-339 24P/17

(1) ILLUSTRATION		(2)	(3)	(4)	(5)	(6)	(7)	(8)
(a) FIG NO.	(b) ITEM NO.	SMR CODE	NATIONAL STOCK NUMBER	FSCM	PART NUMBER	DESCRIPTION USABLE ON CODE	U/M	QTY INC IN UNIT
						GROUP 06 CASING ASS2E BLY		
17		XBFHH		97403	13222E0610	CASTINGASSSY	EA	1
17	1	PAFZZ	5320-00-932-1572	97403	13214E3789-2	RIVET,BLIND	EA	52
17	2	PAFZZ		97403	1321689521	LIP,FILTE	A	1
17	3	PAFZZ	320-00-882-8388	07707	A043H	RIVET BLIN	EA	14
17	4	XBFFF		97403	13214E3382	BRACKET,JUNCTIONBOX,RIGHT SIDE	EA	1
17	5	PAFZZ	5320-00-323-3984	97403	13214E3791-1	RIVET,LIN	EA	8
17	6	PAFZZ	5310-00-089-6304	97403	13211E8382	NUT,SHEET SPRIN	EA	4
17	7	PAOZZ	5305-00-9844989	96906	MS35206-229	SCREW,MACHINE	EA	4
17	8	XBFFF		97403	13222E0112	RACKET,JUNCTION BOX LEFT SIDE	EA	1
T1	9	PAFZZ	3320-00-117-6938	96906	MS20426AD3-4	RIVET,SOLID	EA	8
17	10	PAFZZ	5310-00-680-4985	80205	NAS031A06	HUT,SELF-LOCKING	EA	4
17	11	XBFFF		97403	13214E365s	DAMPER	EA	1
17	12	XBOZZ		97403	13214E3413-2	PANEL	EA	1
17	13	XBZZZ		97403	13214E3631	CHANEL	EA	1
17	14	PAFZZ	5320-00-82-8388	07707	A043H	RIVET,LIND	EA	4
17	15	XUFZZ		97403	13214E3614-1	BLADE,DAMPER	EA	1
17	16	PAFZZ	5310-00-90-1310	96906	S27183-	WASHER,FLAT	EA	8
17	17	XBZZZ	5340-00-302-1415	97403	132LA1191	HINGE,BUTT	EA	7
17	18	MFFFF			ASTM-D-1056 SBE-42-CF2.125 STK	SEALINGSTRIP9 MFR FROM ASTM-D-1056,1/8 IN. X 5/16IN. X.125	SH	V
17	19	NFFFF		81346	42-CF2.125 STK	STK AR LG		
17	19	PAFZZ	4130-00-105-657	97403	13211E8322	CHAIN ASSEMBLY,AIR	EA	1
17	20	PAFZZ	3360-00-105-432	96906	MS245864-C48	SPRING,HELICAL,EXTENSION	EA	
17	21	MFFFF			ASTM-D-1056SB E-42-CF2.06 STK	SEALING STRIP MFR FROM ASTM-D-1056, 1/16 IN. AR LG	SV	
17	22	XBFFF		81346	42-CF2.06STK			
17	23	PAFZZ	320-0-117-638	97403	1314E3632	BRACKET	EA	1
17	24	PAFZZ	5310-00-623-5991	96906	S2046AD3-4	RIVETSOLID	EA	2
				6020	NAS1031A08	NUTSEL-LOCKING	EA	1
						GROUP 07 BULK MATERIAL		
BULK		PAFZZ	4710-00-203-3173	81346	ASTM-B280	TUBE,COPPER .375 OD STOCK	FT	
BULK		PAFZZ	4710-00-203-3173	81346	ASTM-B280	TUBE,COPPER .500 OD STOCK	FT	
BULK		PAFZZ	4710-00-203-3173	81346	ASTM-B280	TUBE,METALLIC .750 OD STOCK	FT	
BULK		PAOZZ	9320-00-815-2798	81349	MIL-R-6130	RUBBER STRIP 1/16 IN. STOCK	SH	
BULK		PAOZZ	9320-01-048-2935	81349	MIL-R-6130GRA DEA	RUBBER STRIP 1/8 IN. STOCK	SH	
BULK		PAOZZ	9320-01-048-4563	81205	BMS1-15CLASS SOFT	RUBBER SHEET, CELLUL 1/4 IN. STOCK	SH	
BULK		PAOZZ		97403	13214E814	INSULATION .0331 OD STOCK	SH	
BULK		PAOZZ	5640-01-031-1261	81349	MIL-I-.4511.250	INSULATION .25 IN. THICK	SH	

(1) ILLUSTRATION		(2)	(3)	(4)	(5)	(6)	(7)	(8)
(a) FIG NO.	(b) ITEM NO.	SMR CODE	NATIONAL STOCK NUMBER	FSCM	PART NUMBER	DESCRIPTION USABLE ON CODE	U/M	QTY INC IN UNIT
BULK		PADZZ	5400-00-785-18784	81341	MIL-1-14511 .500	INSULATION .500 IN. THICK	SH	
BULK		PAOZZ	5970-00-812-269	81349	MIL-I-23053/S CL ASS 1	INSULATION SLEEVING.....	FT	
BULK		PAOZZ		81349	MIL-I-123053/5 FORM T.50IDX.50			
BULK		PAOZZ	4020-00-733-655	84785	WALL B367-2	PLASTIC MATERIAL	EA	
BULK		PAOZZ	6145 00-003-952	81349	M5086/1-10-9	TAP,LACING	SL	
BULK		PAOZZ	6145-00-578-7521	81349	M5086/1-12-9	WIRE,ELECTRICAL	FT	
BULK		PAOZZ	6145-00-578-7516	81349	M5086/1-14-9	WUIREEELECTRICAL	FT	
BULK		PAOZZ	6145-00-578-7517	81349	M5086/1-16-9	WIREIELECTRICAL	FT	
BULK		PAFZZ	4710-00-203-3171	81348	WWT775	TUBE, COPPER .25.0 IN STOCK	FT	

CROSS- REFERENCE-INDEXES
NATIONAL STOCK NUMBER INDEX

STOCK NUMBER	FIG.	ITEM	STOCK NUMBER	FIG.	ITEM
6145-00-003-9527		BULK	5940-00-143-4774	8	38
5320-00-005-6256	16	41	5940-00-143-4774	8	43
5320-00-005-6256	16	49	5940-00-143-4774	8	46
5320-00-005-6279	1	32	5940-00-143-4774	9	5
5945-00-007-7669	8	8	5940-00-143-4774	10	1
4730-00-007-9399	1	58	5940-00-143-4774	11	17
5310-00-014-5850	5	15	5940-00-143-4774	13	15
5310-00-014-5850	8	65	5940-00-143-4774	14	10
5305-00-023-2576	3	6	5940-00-143-4774	16	29
5310-00-043-0520	16	43	5940-00-143-4777	8	61
5310-00-043-0520	16	52	5940-00-143-4777	14	7
5310-00-045-3296	5	7	5940-00-143-4780	4	24
5310-00-045-3296	8	64	5940-00-143-4780	6	9
5310-00-045-3296	11	9	5940-00-143-4780	7	23
5310-00-045-3299	1	14	5940-00-143-4780	7	27
5310-00-045-3299	1	70	5940-00-143-4780	7	31
5310-00-045-3299	3	2	5940-00-143-4780	7	50
5310-00-045-3299	15	46	5940-00-143-4780	7	53
5310-00-045-3299	16	7	5940-00-143-4780	7	56
5310-00-045-3299	16	17	5940-00-143-4780	8	26
5310-00-045-4007	7	7	5940-00-143-4780	8	28
5310-00-045-4007	16	13	5940-00-143-4780	8	33
5305-00-059-4552	8	49	5940-00-143-4780	12	4
5330-00-060-1679	7	64	5940-00-143-4794	8	60
5310-00-060-2039	4	13	5940-00-143-4794	14	8
5310-00-060-2039	15	18	5310-00-143-6203	1	54
5310-00-061-7326	5	17	4730-00-143-8933	15	51
5305-00-063-3503	15	17	5940-00-150-4682	7	36
5305-00-068-0505	1	61	5305-00-163-8349	4	3
5305-00-068-0505	11	6	9905-00-165-7474	2	15
4130-00-073-8404	16	11	5310-00-167-0767	15	55
4820-00-073-8405	15	50	5355-00-171-2442	7	67
5310-00-080-6004	3	9	4540-00-174-0039	15	53
5310-00-080-9786	2	8	4730-00-189-2737	16	14
5310-00-081-4219	3	12	4730-00-189-2739	16	46
5310-00-081-8087	1	64	4710-00-203-3171		
5310-00-081-8087	7	12	4710-00-203-3173	BULK	
5310-00-081-8087	7	44	4710-00-203-3173	BULK	
5310-00-081-8087	7	61	4710-00-203-3173	BULK	
5310-00-081-8087	8	9	4730-00-203-4922	16	34
5310-00-081-8087	8	36	5935-00-221-8620	11	4
5310-00-081-8087	8	55	5306-00-225-8503	3	10
5310-00-082-1404	7	11	5315-00-234-1856	15	22
5310-00-082-1404	7	45	5306-00-235-4727	15	56
5310-00-082-1404	8	58	5930-00-236-2351	5	9
5310-00-087-4652	3	13	5920-00-240-4066	8	50
5310-00-088-0551	1	62	5360-00-240-6526	15	23
5310-00-088-0551	7	63	5340-00-247-6226	7	70
5305-00-088-8923	16	50	5325-00-254-4718	1	34
5305-00-088-9044	5	16	4730-00-254-6449	16	36
5310-00-089-6304	4	7	4730-00-263-6460	15	38
5310-00-089-6304	17	6	5325-00-263-6632	11	19
5340-00-103-2976	5	8	5325-00-263-6632	16	4
5360-00-105-9432	17	20	4730-00-264-9151	16	5
5340-00-106-0551	15	19	4730-00-264-9153	15	43
4130-00-106-1972	4	17	5330-00-267-0697	1	76
4820-00-106-1973	16	31	4720-00-269-7060	15	16
5961-00-106-5259	7	58	5310-00-275-6813	7	46
4130-00-106-5657	17	19	5930-00-275-7800	16	26
4540-00-110-9660	4	1	5325-00-276-6100	15	11
4820-00-112-0047	15	13	5920-00-280-4431	8	52
5320-00-117-6938	1	9	5305-00-283-4649	1	38
5320-00-117-6938	1	52	5940-00-283-5280	6	7
5320-00-117-6938	2	3	5940-00-283-5280	8	11
5320-00-117-6938	15	4	5940-00-283-5280	8	39
5320-00-117-6938	16	24	5325-00-286-6047	5	2
5320-00-117-6938	17	9	5325-00-286-6047	16	3
5320-00-117-6938	17	23	5340-00-302-1415	17	17
5320-00-117-6939	3	20	5930-00-312-4115	16	27
5950-00-118-1018	7	4	5320-00-323-3984	17	5
5330-00-119-7503	4	9	5930-00-396-2244	14	11
3110-00-136-2696	15	24	5930-00-396-2244	15	30
5305-00-140-8001	2	24	5310-00-401-3365	15	58
5940-00-143-4774	6	8	5330-00-402-4645	15	42
5940-00-143-4774	7	35	5310-00-407-9566	3	11
5940-00-143-4774	7	41	5945-00-430-6933	11	1
5940-00-143-4774	8	16	4810-00-433-0763	15	40
5940-00-143-4774	8	19	2990-00-451-4838	7	72
5940-00-143-4774	8	25	5355-00-472-9354	5	14
5940-00-143-4774	8	30	5305-00-543-2419	3	8
5940-00-143-4774	8	34			

CROSS- REFERENCE-INDEXES
NATIONAL STOCK NUMBER INDEX

STOCK NUMBER	FIG.	ITEM	STOCK NUMBER	FIG.	ITEM
5340-33-543-4394	15	37	5940-00-859-4475	6	6
5940-00-543-4394	15	49	5320-00-974-4471	1	43
5945-00-549-6348	7	48	5320-00-974-4471	2	10
5935-00-565-9503	14	2	5310-00-877-5797	2	6
4133-00-572-4709	16	53	5313-00-877-5797	4	8
6145-00-578-7516	BULK		5313-00-877-5797	7	47
6145-00-578-7517	BULK		5310-00-877-5797	8	22
6145-00-578-7521	BLLK		5313-00-577-5797	8	63
5310-00-579-0079	7	13	5310-00-877-5797	15	35
5310-00-579-0079	7	29	5310-00-883-9344	1	39
5355-00-579-2896	5	13	5313-00-883-9344	4	4
5643-00-582-6276	15	9	5310-00-883-9344	7	14
5310-00-582-5965	16	38	5310-00-283-9344	8	5
5313-00-582-5965	16	44	5323-00-882-8388	2	11
5313-00-582-5965	16	51	5323-00-882-8388	17	3
5313-00-584-7888	7	65	5320-00-882-8388	17	14
5313-00-623-5989	1	55	5313-00-089-2549	5	3
5313-00-673-5991	1	8	5310-00-889-2549	5	10
5310-00-623-5991	1	56	5335-00-989-2999	7	1
5310-00-623-5991	2	4	5305-00-889-2999	1	11
5310-00-623-5991	17	24	5335-00-989-2999	1	35
5310-00-680-4985	1	13	5305-00-989-2999	2	71
5310-00-680-4985	16	25	5305-00-889-0001	8	56
5310-00-680-4985	17	10	4130-00-901-0323	1	33
5310-33-680-1628	5	1	4130-00-902-1482	15	29
5310-00-726-9048	3	21	5310-00-902-6676	7	17
5340-00-726-9317	11	10	4730-00-908-3194	15	15
5315-00-730-4564	3	7	5330-00-914-7651	7	60
5315-00-730-4570	3	1	4143-00-922-2191	3	5
5935-00-752-2793	14	5	4133-00-922-2439	1	59
4020-00-753-6555	BULK		5930-00-923-4176	5	11
4733-00-769-3961	15	31	5943-00-926-0085	7	2
5313-00-771-7359	16	40	5043-00-926-0085	7	2
5313-00-771-7359	16	48	5943-00-926-0085	7	32
5310-00-772-3770	15	5	4730-00-926-9649	15	33
5310-00-777-5793	1	51	5935-00-929-7865	13	7
5643-00-785-7888	BULK		4730-03-932-0970	15	6
5935-00-801-6623	14	1	5320-03-932-1972	1	4
5310-00-839-0078	7	5	5320-00-932-1972	1	41
5310-00-809-4358	1	60	5323-00-932-1972	2	12
5310-00-809-4058	11	7	5323-00-932-1972	2	27
5310-00-839-8544	3	3	5320-00-932-1977	4	6
5310-00-389-8544	4	14	5320-03-932-1972	17	1
5310-00-809-8544	16	8	5343-09-934-0532	2	32
5310-00-809-8544	16	19	5310-03-934-9747	7	6
5310-00-809-8546	2	7	5975-03-937-3680	13	3
5310-00-809-8546	4	11	5920-00-939-5442	8	48
5310-00-809-8546	5	20	5310-00-950-1310	17	16
5310-00-809-8546	15	2	5305-00-958-0588	16	42
5310-00-811-3494	1	74	5335-00-959-5237	7	15
5310-00-811-3494	7	62	4130-00-981-6683	11	4
5973-00-812-2969	BULK		5310-03-984-3806	15	54
9323-33-815-2798	BULK		5305-00-084-4984	7	1a
5915-00-816-4802	13	16	5305-00-984-4984	16	12
5935-00-816-8646	13	13	5335-03-984-4988	8	7
4733-00-818-7778	15	39	5305-00-984-4988	8	57
5313-00-821-2366	1	15	5305-00-984-4989	17	16
5313-00-821-2366	1	67	5335-00-984-4992	1	6-
5313-00-821-2366	15	28	5335-00-984-4992	2	16
4730-00-821-0017	16	35	5335-03-984-4992	7	10
4730-00-821-9184	15	13	5305-00-994-6193	5	5
4730-00-821-9184	15	32	5335-00-984-6193	15	45
4733-00-822-1274	16	2	5305-00-984-6194	1	5
5913-00-822-5683	7	59	5305-00-984-6194	3	1
5343-00-823-5322	9	2	5305-00-984-6194	4	15
5343-00-823-5322	12	2	5305-00-984-6194	15	44
5343-00-823-5322	13	10	5335-00-984-6194	16	6
5343-00-823-5322	14	6	5305-00-984-6195	1	13
5313-00-823-8804	16	18	5305-00-984-6195	1	69
5333-00-828-3628	7	65	5305-00-984-6195	7	8
5935-00-935-4208	12	1	5305-03-984-6195	16	16
5330-00-836-4355	1	77	5305-00-984-6196	7	71
5330-00-836-4355	2	25	5305-00-984-6197	1	72
5935-00-846-2329	9	1	5305-00-984-6213	8	66
5935-00-847-6124	13	1	5305-00-989-7434	5	6
5305-00-835-2548	5	19	5305-00-989-7434	7	9
5310-00-852-1115	1	53	5305-00-989-7435	4	10
7510-00-852-8179	16	32	5305-00-989-7435	5	18
5305-00-857-5867	4	12	5305-00-989-7435	15	48
5305-00-857-5867	15	1	5305-00-993-1848	1	66

**CROSS- REFERENCE-INDEXES
NATIONAL STOCK NUMBER INDEX**

STOCK NUMBER	FIG.	ITEM	STOCK NUMBER	FIG.	ITEM
5305-00-993-1848	11	8	4130-01-048-2139	15	52
5305-00-993-1848	15	27	9320-01-048-2935	BULK	
5305-00-993-2738	16	37	9320-01-048-4563	BULK	
5305-00-995-3442	15	34	9905-01-053-5362	1	31
4820-01-015-6690	16	15	5961-01-054-4150	10	2
5340-01-026-3363	15	47	9905-01-055-0219	2	28
5305-01-028-6271	3	18	5310-01-055-8419	2	5
5640-01-031-1261	BULK		4130-01-057-2838	15	3
5310-01-032-4875	15	57	5935-01-068-7478	13	11
5325-01-033-0848	1	2	5925-01-071-7019	7	16
5310-01-038-0908	2	30	5330-01-082-5474	1	6
5310-01-036-4687	1	75	5365-01-090-2070	7	69
4820-01-038-8231	16	1	4710-01-091-3908	15	20
5340-01-039-0103	4	2	4730-01-092-3835	16	20
5310-01-043-5788	16	10	5365-01-114-0777	15	59
5310-01-045-6613	2	1			

FSCM PART NUMBER	FIGURE NO.	ITEM NO.	FSCM PART NUMBER	FIGURE NO.	ITEM NO.
07707 AD43H	2	11	81349 MIL-I-23053/5CLASS 1	BULK	
07707 AD43H	17	3	81349 MIL-I-23053/5CLASS 1	4	18
07707 AD43H	17	14	81349 MIL-I-23053/5CLASS 1	7	43
07707 AD45H	1	43	81349 MIL-I-23053/5CLASS 1	8	21
07707 AD45H	2	10	81349 MIL-P-15280 FORMT.50 ID X .50 WALL		BULK
88044 AN970-5	15	55	81349 MIL-P-15280 FORMT.50 ID X .50 WALL	16	33
81346 ASTM-B280	BULK		81349 MIL-R-6130	BULK	
81346 ASTM-B280	BULK		81349 MIL-R-6130 GRADEA	BULK	
81346 ASTM-B280	BULK		81349 MIL-T-22085	16	32
81346 ASTM-B280.25 OD	15	14	81349 MIL-T-43435 TYPE1 FINISH B SIZE 3	6	5
81346 ASTM-B280 .375 OD	15	12	81349 MIL-T-43435 TYPE1 FINISH B SIZE 3	9	4
81346 ASTM-B280.50 OD	15	7	81349 MIL-T-43435 TYPE1 FINISH B SIZE 3	13	2
81346 ASTM-B280.75 OD	15	9	81349 MIL-T-43435 TYPE1 FINISH B SIZE 3	14	3
81346 ASTM-D-1056 SBE-42-CF2.06 STK	1	42	81349 MIL-T-5516413	8	23
81346 ASTM-D-1056 SBE-42-CF2.06 STK	1	57	81349 MILC11015-12	7	59
81346 ASTM-D-1058 SBE-42-CF2 .06 STK	17	21	98906 MS20066-143	3	7
81346 ASTM-D-1056 SBE-42-CF2.125 STK	1	18	96906 MS20066-145	3	24
81346 ASTM-D-1056 SBE-42-CF2.125 STK	1	19	96906 MS20426AD3-4	1	9
81346 ASTM-D-1056 SBE-42-CF2.125 STK	1	20	96906 MS20426AD3-4	1	52
81346 ASTM-D-1056 SBE-42-CF2.125 STK	1	29	96906 MS20426AD3-4	2	3
81346 ASTM-D-1056 SBE-42-CF2.125 STK	1	30	98906 MS20426AD3-4	15	4
81346 ASTM-D-1056 SBE-42-CF2.125 STK	1	48	96906 MS20426AD3-4	16	24
81346 ASTM-D-1056 SBE-42-CF2.125 STK	1	49	96906 MS20426AD3-4	17	9
81346 ASTM-D-1056 SBE-42-CF2.125 STK	2	23	96906 MS20426AD3-4	17	23
81346 ASTM-D-1056 SBE-42-CF2.125 STK	17	18	96906 MS20426AD3-5	3	20
81346 ASTM-D-1056 SBE-42-CF2.25 STK	1	17	96906 MS20470AD4-3-5	1	32
81346 ASTM-D-1056 SBE-42-CF2.25 STK	1	28	96906 MS20470AD4-4-5	1	32
81346 ASTM-D-1056 SBE-42-CF2.25 STK	2	29	96906 MS21044-N06	1	64
81346 ASTM-D-1056 SBE-42-CF2 1/8 STK	1	27	96906 MS21044-N06	7	12
81346 ASTM-D-1056-SBE-42-CF2.125 STK	8	2	96906 MS21044-N06	7	44
81346 ASTM-D-1056-SBE-42-CF2.125STK	8	3	98906 MS21044-N06	7	61
81346 ASTMD-710 ELEC-GRADE COLORGREY	8	51	96908 MS21044-N06	8	9
81346 ASTMD-710 ELEC-GRADE COLORGREY	8	54	96906 MS21044-N06	8	36
41947 A13563	15	31	96906 MS21044-N06	8	55
92578 A19AEF-10	5	11	96906 MS21044D08	4	13
41625 A37693	7	72	96906 MS21044D08	15	18
81205 BMS1-1SCLASSSOFT	BULK		96906 MS21044N04	1	62
84785 B367-2	BULK		96906 MS21044N04	7	63
41625 B43310-1	7	67	96906 MS21044N08	1	74
41625 B48701-000-0022.0	7	66	96906 MS21044N08	7	62
11815 CCR264SS3-4	16	41	96906 MS21044N3	2	6
11815 CCR264SS3-4	16	49	96906 MS21044N3	4	8
98930 C1503-01	15	50	96906 MS21044N3	7	47
65586 C205	15	53	96906 MS21044N3	8	22
49367 DB92100	13	3	96906 MS21044N3	8	63
70255 EK-083	16	53	96906 MS21044N3	15	35
77820 FP3106C28-1IP	6	2	96906 MS21045-08	5	3
98003 H561LS2RG	2	32	96906 MS21045-08	5	10
74193 JA3-Z79-1	7	21	96906 MS21045-3	5	17
71400 KAWS	8	48	96906 MS21059L4	1	51
81349 MIL-F-1516019	8	52	96906 MS21075L3	15	5
81349 MIL-I-14511 .250	BULK		96906 MS21076-L4	16	40
81349 MIL-I-14511 .250	1	25	96906 MS21076-L4	16	48
81349 MIL-I-14511 .250	1	46	96906 MS21082-08	3	21
81349 MIL-I-14511 .500	BULK		96906 MS21083N3	7	17
81349 MIL-I-14511 .500	1	24	96906 MS21104-D10	15	19
81349 MIL-I-14511 .500	1	47	96906 MS21104D3	7	70

SECTION IV

TM 5-4120-339-24P

FSCM	PART NUMBER	FIGURE NO.	ITEM NO.	FSCM	PART NUMBER	FIGURE NO.	ITEM NO.
96906	MS21105-6	5	8	96906	MS27183-7	16	8
96906	MS21919DYG6	15	37	96906	MS27183-7	16	19
96906	MS21919DYG6	15	49	96906	MS27183-8	2	7
96906	MS21919DYG9	11	10	96906	MS27183-8	4	11
96906	MS21919WCH10	15	19	96906	MS27183-8	5	20
96906	MS21919WCH3	7	70	96906	MS27183-8	15	2
96906	MS21919WCH6	15	37	96906	MS27183-9	16	18
96906	MS21919WCH6	15	49	98906	MS3100R1SS1PW	12	1
96906	MS21919WCH9	11	10	96906	MS3100R20-4P	13	7
96906	MS24192D1	7	48	96906	MS3100R28-11S	14	1
96906	MS24523-2	5	1	96906	MS3102R-145-6P	3	17
96906	MS24586-C48	17	20	96906	MS3102R20-27P	3	7
96906	MS24665-155	15	22	96906	MS3106R10SL3P	13	16
96906	MS24693-S50	15	17	96906	MS3106R16S1SW	13	11
96906	MS25036-106	6	7	96906	MS3106R20-15S	13	13
96906	MS25036-106	8	11	96906	MS3106R20-27S	9	1
96906	MS25036-106	8	39	96906	MS3106R28-12P	14	5
96906	MS25036-107	14	11	96906	MS3106R32-6S	13	1
96906	MS25036-108	4	19	96906	MS3367-2-9	6	5
96906	MS25036-108	4	24	96906	MS35190-237	8	49
96906	MS25036-108	6	9	96906	MS35191-266	3	18
96906	MS25036-108	7	23	96906	MS35206-216	7	1
96906	MS25036-108	7	27	96906	MS35206-217	1	11
96906	MS25036-108	7	31	96906	MS35206-217	1	35
96906	MS25036-108	7	50	96906	MS35206-217	2	21
96906	MS25036-108	7	53	96906	MS35206-226	7	19
96906	MS25036-108	7	56	96906	MS35206-227	16	12
96906	MS25036-108	8	26	96906	MS35206-22	8	7
96905	MS25036-108	6	29	96906	MS35206-228	8	57
96906	MS25036-108	8	33	96906	MS35206-229	17	7
96906	MS25036-108	12	4	96906	MS35206-230	8	57
96906	MS25036-112	8	60	96906	MS35206-231	8	56
96906	MS25036-112	14	9	96906	MS35206-232	1	63
96906	MS25036-153	6	8	96906	MS35206-232	2	16
96906	MS25036-153	7	35	96906	MS35206-232	7	10
96906	MS25036-153	7	41	96906	MS35206-245	5	5
96906	MS25036-153	8	16	96906	MS35206-245	15	45
96906	MS25036-153	8	19	96906	MS35206-246	1	5
96906	MS25036-153	8	25	96906	MS35206-246	2	21
96906	MS25036-153	8	30	96906	MS35206-246	3	1
96906	MS25036-153	8	34	96906	MS35206-246	4	15
96906	MS25036-153	8	43	96906	MS35206-246	15	44
96906	MS25036-153	8	46	96906	MS35206-246	16	6
96906	MS25036-153	9	5	96906	MS35206-247	1	13
96906	MS25036-153	10	1	96906	MS35206-247	1	69
96906	MS25036-153	11	17	96906	MS35206-247	7	8
96906	MS25036-153	13	15	96906	MS35206-247	16	16
96906	MS25036-153	14	10	96906	MS35206-248	7	71
96906	MS25036-153	16	29	96906	MS35208-249	1	72
96906	MS25036-157	8	61	96906	MS35206-266	8	66
96906	MS25036-157	14	7	96906	MS35206-268	11	8
96906	M525043-200	11	4	96906	MS35207-260	5	16
96906	MS25165-1	5	13	96906	M335207-263	5	6
96906	MS25251-12	14	2	96906	MS35207-263	7	9
96906	M525251-16	9	2	96906	M535207-264	4	10
96906	M525251-16	12	2	96906	MS35207-264	5	18
96906	MS25251-16	13	10	96906	MS35207-264	15	48
96906	MS25251-16	14	6	96906	MS35207-265	1	66
96906	MS27130-S13K	16	10	96906	MS35207-265	11	8
96906	MS27130-S14K	2	30	96906	MS35207-265	15	27
96906	MS27130-S15K	1	75	96906	M535207-268	15	34
96906	MS27130-S25K	2	5	96906	MS35207-280	16	37
96906	MS27130-S50K	2	1	96906	MS35207-285	16	50
96906	MS27130-S93	16	22	96906	MS35207-287	16	42
96906	MS27183-10	1	60	96906	MS35333-37	7	13
96906	MS27183-10	11	7	96906	MS35333-37	7	20
96906	MS27183-11	7	5	96906	MS35335-32	7	68
96906	MS27183-12	3	12	96906	MS35338-32	7	68
96906	MS27183-14	3	9	96906	MS35338-41	7	7
96906	MS27183-4	17	16	96906	MS35338-41	16	13
96906	MS27183-42	5	15	96906	MS35338-42	1	14
96906	M527183-42	8	65	96906	MS35338-42	3	2
96906	M527183-6	7	11	96906	MS35338-42	15	46
96906	M527183-6	7	45	98906	MS35338-42	16	7
96906	MS27183-6	8	58	96906	MS35338-42	16	17
96905	MS27183-7	3	3	96906	MS35338-42	1	70
96906	MS27183-7	4	14	96906	MS35338-43	5	7

FSCM PART NUMBER	FIGURE NO.	ITEM NO.	FSCM PART NUMBER	FIGURE NO.	ITEM NO.
96906 M535338-43	8	64	81349 M5086/1-16-9	10	3
96906 MS35338-43	11	9	81349 M5086/1-16-9	11	18
96906 MS35338-44	16	38	81349 M5086/1-16-9	12	3
96906 M535338-44	16	44	81349 M5086/1-16-9	13	9
96906 MS35338-44	16	51	81349 M5086/1-16-9	13	14
96906 M535338-45	3	11	81349 M5086/1-16-9	13	17
96906 MS35351-12	6	3	81349 M5086/1-16-9	14	4
96906 MS35489-1	5	2	81349 M5086/1-16-9	16	30
96906 MS35489-1	16	3	80205 NAS1031A06	1	10
96906 MS35489-14	15	11	80205 NAS1031A06	16	25
96906 M535489-6	11	19	80205 NAS1031A06	17	10
96906 MS35489-6	16	4	80205 NAS1031A08	1	8
96906 M535649-262	7	6	80205 NAS1031A08	1	56
96906 MS35650-3252	16	43	80205 NAS1031A08	2	4
96906 MS35650-3252	16	52	80205 NAS1031A08	17	24
96906 MS35842-11	15	15	80205 NAS1031A3	1	55
96906 MS35872-2	16	14	80205 NAS1031A4	1	51
96906 MS35872-3	16	46	80205 NAS1329508KB75	1	54
96906 MS35920-3	15	6	80205 NAS1329S3KB80	1	53
96906 MS35927-2	16	5	80205 NAS1523C3F	4	9
96906 MS35927-3	15	43	93781 OR-23-24VDC	15	41
96906 MS35929-3	15	38	93781 OR-320-24VDC	15	40
96906 MS45904-60	2	8	93781 OR-23MM24VDC431N	15	41
96906 MS51007-10	7	65	77342 PM4030	11	1
96906 MS51007-10	1	76	93781 P45-11	15	42
96906 MS51007-11	1	76	78462 SA-K13	16	11
96906 MS51007-12	7	60	58849 SS-329	7	58
96906 MS51007-2	7	64	81348 WWT775	BULK	
96906 MS51007-7	1	77	41947 W40350	15	32
96906 MS51007-7	2	25	74193 006-10245	7	16
96906 MS51021-62	3	6	64731 01-010999-204	3	15
96906 MS51861-12	2	24	09214 IN1695	10	2
96906 MS51922-17	3	13	94222 12-11-303W-8	8	4
96906 MS51922-9	15	54	94222 12-11-713-11	1	38
96906 MS63045	1	3	97403 13208E4182-7	15	52
96906 MS90725-39	3	10	97403 13211E3784	8	53
96906 MS9075-61	3	8	97403 13211E3799-1	16	2
96906 MS90725-63	3	8	97403 13211E4043-11	16	34
96906 MS90726-5	1	61	97403 13211E4043-12	15	10
96906 MS90726-5	11	6	97403 13211E4043-6	15	39
96906 MS9122-03	4	12	97403 13211E8166	15	56
96906 MS9122-03	15	1	97403 13211E8170	15	58
96906 MS9122-11	5	19	97403 13211E8178	1	58
96906 MS91528-1C4B	5	14	97403 13211E8180	13	4
96906 MS9241-007	7	38	97403 13211E8191	17	17
82647 MWA1255	4	17	97403 13211E8215	2	15
82647 MYH28WO	3	13	97403 13211E8222	1	34
64731 MYH71WO	3	16	97403 13211E8265	4	17
81349 M5086/1-10-9	BULK		97403 13211E8273	2	31
81349 M5086/1-10-9	8	62	97403 13211E8288	6	6
81349 M5086/1-10-9	14	8	97403 13211E8305	1	59
81349 M5086/1-12-9	BULK		97403 13211E8320-7	13	8
81349 M5086/1-12-9	13	6	97403 13211E822	17	19
81349 M5086/1-14-9	BULK		97403 13211E8323	15	16
81349 M5086/1-14-9	7	25	97403 13211E8337	1	39
81349 M5086/1-14-9	7	29	97403 13211E8337	4	4
81349 M5086/1-14-9	7	33	97403 13211E8337	7	14
81349 M5086/1-14-9	7	51	97403 13211E8337	8	5
81349 M5086/1-14-9	7	54	97403 13211E8369	15	50
81349 M5086/1-14-9	7	57	97403 13211E8376-1	11	11
81349 M5086/1-14-9	8	27	97403 13211E8376-1	15	36
81349 M5086/1-14-9	8	31	97403 13211E8376-5	7	69
81349 M5086/1-14-9	8	35	97403 13211E8382	4	7
81349 M5086/1-14-9	13	12	97403 13211E8382	17	6
81349 M5086/1-16-9	BULK		97403 13211E8386	1	36B
81349 M5086/1-16-9	4	20	97403 13211E8404	16	26
81349 M5086/1-16-9	4	25	97403 13211E8406-1	16	39
81349 M5086/1-16-9	6	4	97403 13211E8406-2	16	47
81349 M5086/1-16-9	7	37	97403 13211E8410	15	26
81349 M5086/1-16-9	7	42	97403 13211E8410	15	21
81349 M5086/1-16-9	8	12	97403 13211E8411	15	24
81349 M5086/1-16-9	8	14	97403 13211E8412	15	23
81349 M5086/1-16-9	8	17	97403 13214E3382	17	4
81349 M5086/1-16-9	8	20	97403 13214E3384	1	7
81349 M5086/1-16-9	8	40	97403 13214E3386	1	50
81349 M5086/1-16-9	8	44	97403 13214E3411-1	15	33
81349 M5086/1-16-9	8	47	97403 13214E3411-3	15	51
81349 M5086/1-16-9	9	3	97403 13214E3412	8	1
			97403 13214E3413-2	17	12

FSCM	PART NUMBER	FIGURE NO.	ITEM NO.	FSCM	PART NUMBER	FIGURE NO.	ITEM NO.
97403	13214E3416	4	2	97403	13218E7075	2	19
97403	13214E3419	16	9	97403	13218E7076	1	36
97403	13214E3467	13	3	97403	13218E7078	2	13
97403	13214E3469	1	15	97403	13218E7079	1	40
97403	13214E3469	1	67	97403	13218E7489	2	22
97403	13214E3469	15	28	97403	13218E9895-2	7	2
97403	13214E3471-1	1	12	97403	13218E9902	11	3
97403	13214E3471-2	1	65	97403	13218E9902	13	
97403	13214E3476	15	57	97403	13218E9909	5	12
97403	13214E3484	15	20	97403	13218E9911	5	4
97403	13214E3486	15	25	97403	13218E9960	7	3
97403	13214E3487-2	7	39	97403	13219E2931	7	
97403	13214E3506	4	16	97403	13219E2933	5	
97403	13214E3507-2	7	40	97403	13219E9499-1	16	15
97403	13214E3511	6	1	97403	13219E9540	16	20
97403	13214E3523-6	7	48	97403	13220E0607	15	3
97403	13214E3524	15	40	97403	13220E5281	1	6
97403	13214E3533	1	68	97403	13220E5385-2	7	18
97403	13214E3557	16	53	97403	13220E5386	7	73
97403	13214E3588-2	15	13	97403	13220E5413-2	1	21
97403	13214E3578-1	16	23	97403	13220E5600	1	23
97403	13214E3587	12		97403	13220E5601	1	22
97403	13214E3592-1	15	47	97403	13220E5672	13	5
97403	13214E3612	1	73	97403	13220E6702-27	8	10
97403	13214E3614-1	17	15	97403	13220E6702-28	8	13
97403	13214E3615	2	26	97403	13220E6702-29	8	15
97403	13214E3616	1	71	97403	13220E6702-33	8	18
97403	13214E3623	3	22	97403	13220E6707	9	
97403	13214E3627	3	19	97403	13220E6708	10	
97403	13214E3629-1	4	5	97403	13220E6709	11	5
97403	13214E3631	17	13	97403	13220E6709	14	
97403	13214E3632	17	22	97403	13220E6712-1	8	32
97403	13214E3647-3	1	2	97403	13220E6712-10	7	30
97403	13214E3652	7	58	97403	13220E6712-11	4	21
97403	13214E3655	17	11	97403	13220E6712-12	4	22
97403	13214E3659	15	59	97403	13220E6712-13	4	23
97403	13214E3666	2	2	97403	13220E6712-18	7	34
97403	13214E3685-2	7	3	97403	13220E6712-19	11	13
97403	13214E3693	3	5	97403	13220E6712-2	7	49
97403	13214E3694	3	23	97403	13220E6712-20	11	14
97403	13214E3698-1	4	1	97403	13220E6712-21	11	12
97403	13214E3699-1	1	33	97403	13220E6712-22	11	15
97403	13214E3703	1	1	97403	13220E6712-26	16	28
97403	13214E3712	1	16	97403	13220E6712-3	8	28
97403	13214E3713	1	26	97403	13220E6712-30	8	37
97403	13214E3742	16	31	97403	13220E6712-32	8	42
97403	13214E3744V34	4	3	97403	13220E6712-36	11	16
97403	13214E3744W4	7	5	97403	13220E6712-4	7	52
97403	13214E3785-2	16	1	97403	13220E6712-5	8	24
97403	13214E3789-2	1	4	97403	13220E6712-6	7	55
97403	13214E3789-2	1	41	97403	13220E6712-7	8	59
97403	13214E3789-2	2	12	97403	13220E6712-8	7	22
97403	13214E3789-2	2	27	97403	13220E6712-9	7	26
97403	13214E3789-2	4	6	97403	13220E6720-4	1	37
97403	13214E3789-2	17	1	97403	13220E6720/9	1	44
97403	13214E3791-1	17	5	97403	13220E6722	16	21
97403	13214E3792	3	4	97403	13220E6723	2	14
97403	13214E3794	16	27	97403	13220E6726	1	45
97403	13214E3798-2	16	45	97403	13221E9273-2	15	30A
97403	13214E3804	8	41	97403	13222E0610	17	
97403	13214E3814	BULK		97403	13222E0612	17	8
97403	13214E3818-3	7	4	97403	13222E3701-1	16	23
97403	13215E9909-10	1	36	97403	13222E6356	8	6
97403	13216E6176-3	16	35	97403	13222E7230	11	5
97403	13216E6190-3	16	36	97403	13222E7284	1	45
97403	13216E6191.2	7	24	97403	13222E7285-2	1	37
97403	13216E6191-2	7	28	97403	13222E7285/9	1	44
97403	13216E6191-2	7	32	02280	1600-S590-3	8	8
97403	13216E6192	7	36	77464	165	15	8
97403	13216E9519-1	2	18	70611	2267A1	5	9
97403	13216E9520-1	2	17	71400	4515	8	50
97403	13216E9521	17	2	93781	5-70157	15	40
97403	13217E2344	1	31	64731	5530-15	3	14
97403	13217E6814	2	28	82647	6PS306N405N285L	14	11
97403	13217E6815-4	7	66	82647	6P5306N405N285L	15	30
97403	13217E6816	7	67	93781	7W996	15	41
97403	13217E6817	7	72	10855	76G2-224	15	29
97403	13218E7074	2	20				

By Order of the Secretary of the Army:

E. C. MEYER
General, United States Army
Chief of Staff

Official:

ROBERT M. JOYCE
Brigadier General, United States Army
The Adjutant General

DISTRIBUTION:

To be distributed in accordance with DA Form 12-25C, Organizational Maintenance requirements for Environmental Equipment, Air Conditioners 9000 BTU.

* U.S. GOVERNMENT PRINTING OFFICE: 1990 - 261-888/22677

RECOMMENDED CHANGES TO EQUIPMENT TECHNICAL PUBLICATIONS



THEN... JOT DOWN THE DOPE ABOUT IT ON THIS FORM, CAREFULLY TEAR IT OUT, FOLD IT AND DROP IT IN THE MAIL!

SOMETHING WRONG WITH THIS PUBLICATION?

FROM: (PRINT YOUR UNIT'S COMPLETE ADDRESS)

DATE SENT

PUBLICATION NUMBER

PUBLICATION DATE

PUBLICATION TITLE

BE EXACT... PIN-POINT WHERE IT IS

PAGE NO.

PARA-GRAPH

FIGURE NO.

TABLE NO.

IN THIS SPACE TELL WHAT IS WRONG AND WHAT SHOULD BE DONE ABOUT IT:

TEAR ALONG PERFORATED LINE

PRINTED NAME, GRADE OR TITLE, AND TELEPHONE NUMBER

SIGN HERE:

DA FORM 2028-2 JUL 79

PREVIOUS EDITIONS ARE OBSOLETE.

P.S.—IF YOUR OUTFIT WANTS TO KNOW ABOUT YOUR RECOMMENDATION MAKE A CARBON COPY OF THIS AND GIVE IT TO YOUR HEADQUARTERS.

The Metric System and Equivalents

Linear Measure

1 centimeter = 10 millimeters = .39 inch
 1 decimeter = 10 centimeters = 3.94 inches
 1 meter = 10 decimeters = 39.37 inches
 1 dekameter = 10 meters = 32.8 feet
 1 hectometer = 10 dekameters = 328.08 feet
 1 kilometer = 10 hectometers = 3,280.8 feet

Weights

1 centigram = 10 milligrams = .15 grain
 1 decigram = 10 centigrams = 1.54 grains
 1 gram = 10 decigrams = .035 ounce
 1 dekagram = 10 grams = .35 ounce
 1 hectogram = 10 dekagrams = 3.52 ounces
 1 kilogram = 10 hectograms = 2.2 pounds
 1 quintal = 100 kilograms = 220.46 pounds
 1 metric ton = 10 quintals = 1.1 short tons

Liquid Measure

1 centiliter = 10 milliliters = .34 fl. ounce
 1 deciliter = 10 centiliters = 3.38 fl. ounces
 1 liter = 10 deciliters = 33.81 fl. ounces
 1 dekaliter = 10 liters = 2.64 gallons
 1 hectoliter = 10 dekaliters = 26.42 gallons
 1 kiloliter = 10 hectoliters = 264.18 gallons

Square Measure

1 sq. centimeter = 100 sq. millimeters = .155 sq. inch
 1 sq. decimeter = 100 sq. centimeters = 15.5 sq. inches
 1 sq. meter (centare) = 100 sq. decimeters = 10.76 sq. feet
 1 sq. dekameter (are) = 100 sq. meters = 1,076.4 sq. feet
 1 sq. hectometer (hectare) = 100 sq. dekameters = 2.47 acres
 1 sq. kilometer = 100 sq. hectometers = .386 sq. mile

Cubic Measure

1 cu. centimeter = 1000 cu. millimeters = .06 cu. inch
 1 cu. decimeter = 1000 cu. centimeters = 61.02 cu. inches
 1 cu. meter = 1000 cu. decimeters = 35.31 cu. feet

Approximate Conversion Factors

<i>To change</i>	<i>To</i>	<i>Multiply by</i>	<i>To change</i>	<i>To</i>	<i>Multiply by</i>
inches	centimeters	2.540	ounce-inches	newton-meters	.007062
feet	meters	.305	centimeters	inches	.394
yards	meters	.914	meters	feet	3.280
miles	kilometers	1.609	meters	yards	1.094
square inches	square centimeters	6.451	kilometers	miles	.621
square feet	square meters	.093	square centimeters	square inches	.155
square yards	square meters	.836	square meters	square feet	10.764
square miles	square kilometers	2.590	square meters	square yards	1.196
acres	square hectometers	.405	square kilometers	square miles	.386
cubic feet	cubic meters	.028	square hectometers	acres	2.471
cubic yards	cubic meters	.765	cubic meters	cubic feet	35.315
fluid ounces	milliliters	29.573	cubic meters	cubic yards	1.308
pints	liters	.473	milliliters	fluid ounces	.034
quarts	liters	.946	liters	pints	2.113
gallons	liters	3.785	liters	quarts	1.057
ounces	grams	28.349	liters	gallons	.264
pounds	kilograms	.454	grams	ounces	.035
short tons	metric tons	.907	kilograms	pounds	2.205
pound-feet	newton-meters	1.356	metric tons	short tons	1.102
pound-inches	newton-meters	.11296			

Temperature (Exact)

°F	Fahrenheit temperature	5/9 (after subtracting 32)	Celsius temperature	°C
----	---------------------------	-------------------------------	------------------------	----

PIN: 050275-000